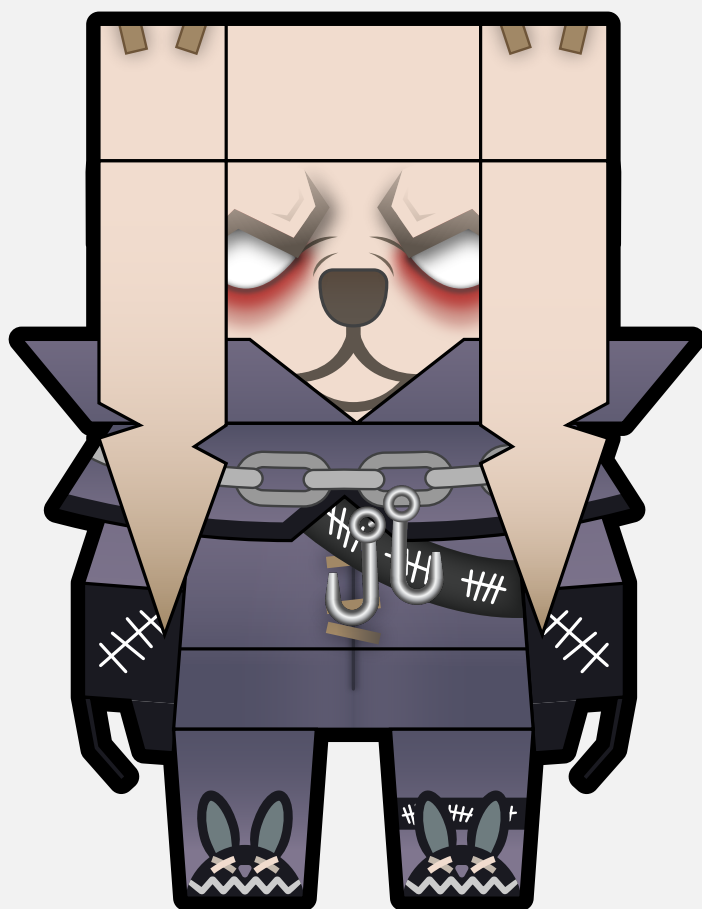


FORTNITE®

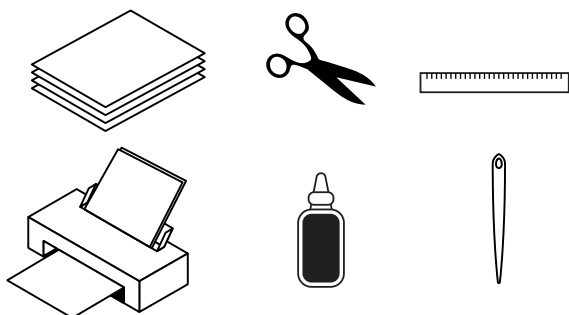
#SPRINGBREAKOUT

DARKO MINIFIGURA DE DOBRADURA



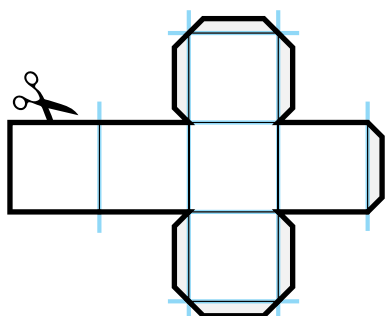
COMO MONTAR

NÍVEL DE DIFICULDADE: MUITO FÁCIL
TEMPO NECESSÁRIO: 40-60 MINUTOS



Materiais Necessários:

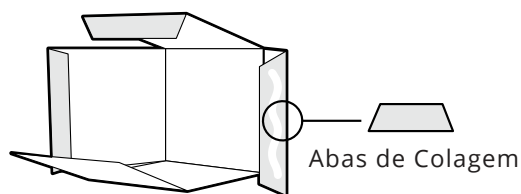
- Papel ou cartolina A4 ou Carta
- Espessura recomendada: 120 g/m² a 160 g/m²
- Impressora
- Tesoura ou estilete
- Cola de artesanato
- Dobradeira ou agulha grossa
- Régua



1. Imprimir, Vincar e Recortar

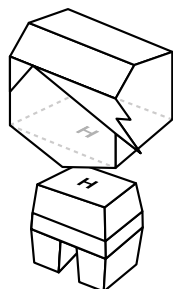
Imprima o molde. Usando uma dobradeira ou agulha de costura grossa e uma régua, vinque as linhas de dobra (ilustrado em azul) para dobrar as partes com facilidade.

Agora, recorte as partes do molde ao longo das bordas.



2. Dobrar e Colar

Dobre e cole cada bloco de construção da figura separadamente. Aplique a cola nas abas de colagem conforme a ilustração.

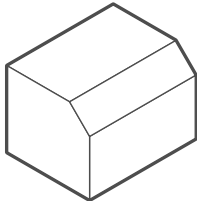


3. Montar

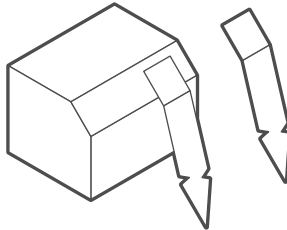
Junte as peças individuais. Consulte as pequenas identificações para saber o local de cada parte e monte a figura na ordem correta.

ORDEM DE MONTAGEM

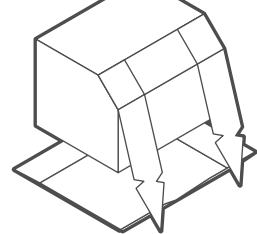
1.



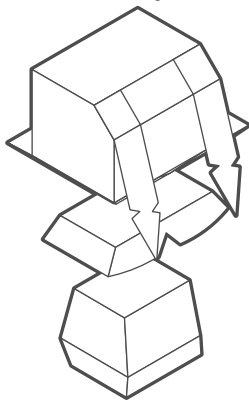
2.



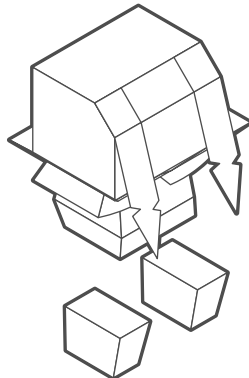
3.



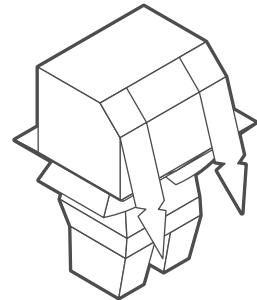
4.



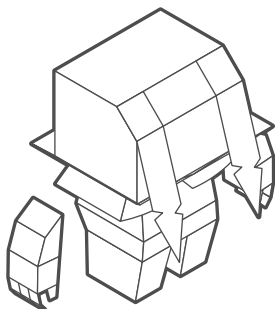
5.



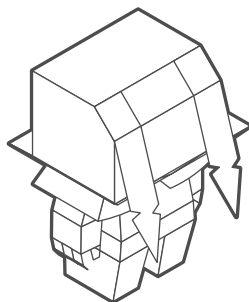
6.



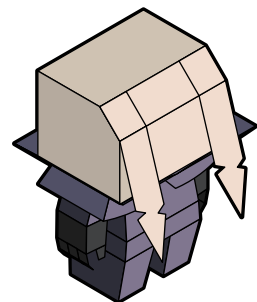
7.

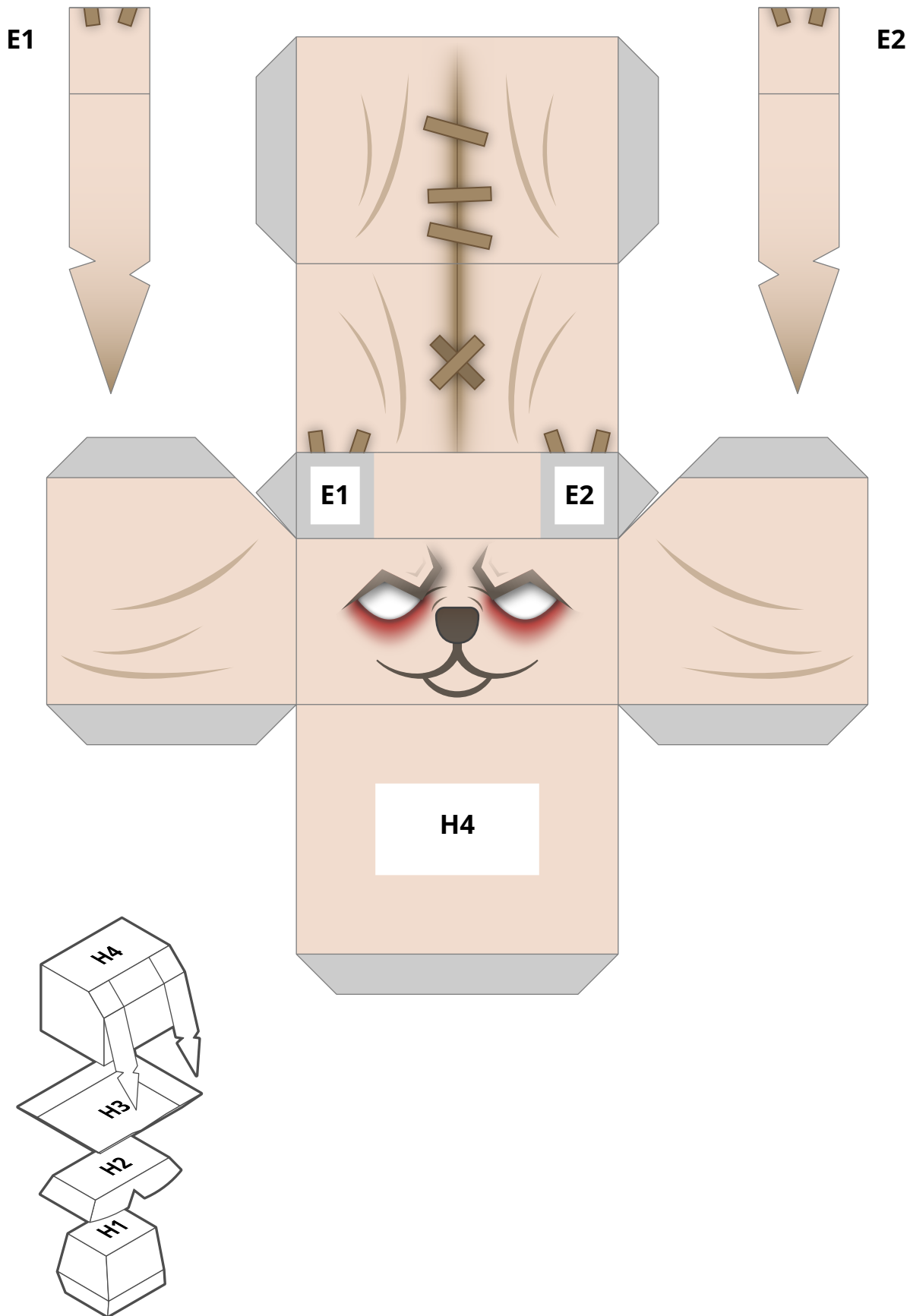


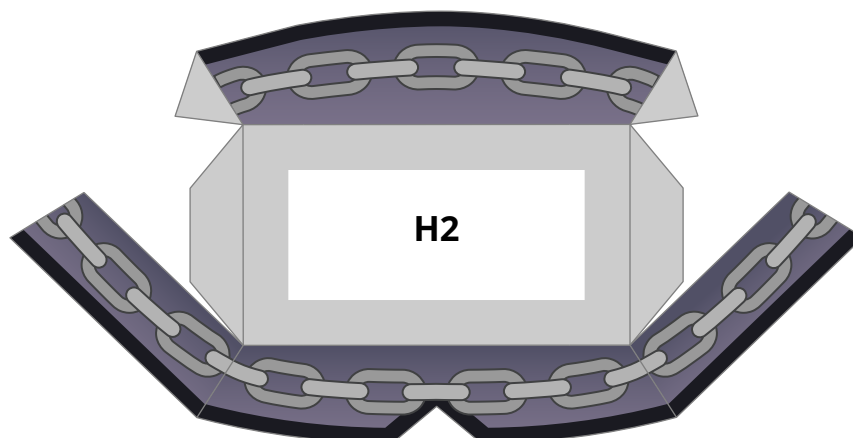
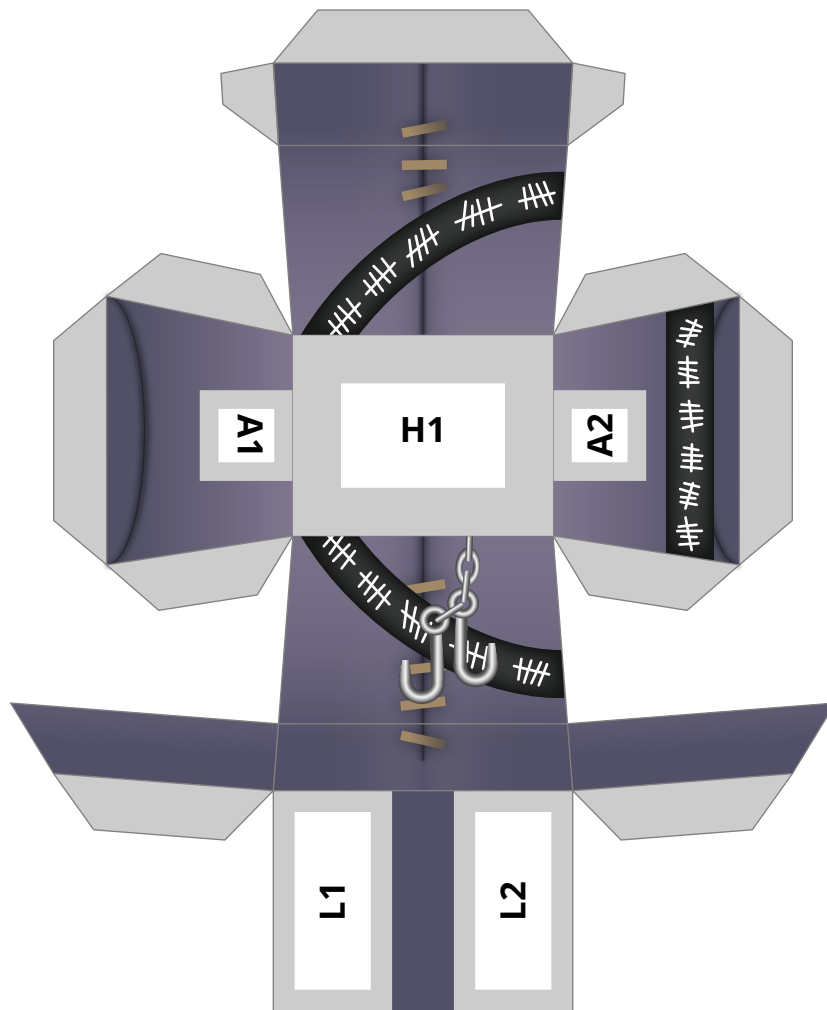
8.

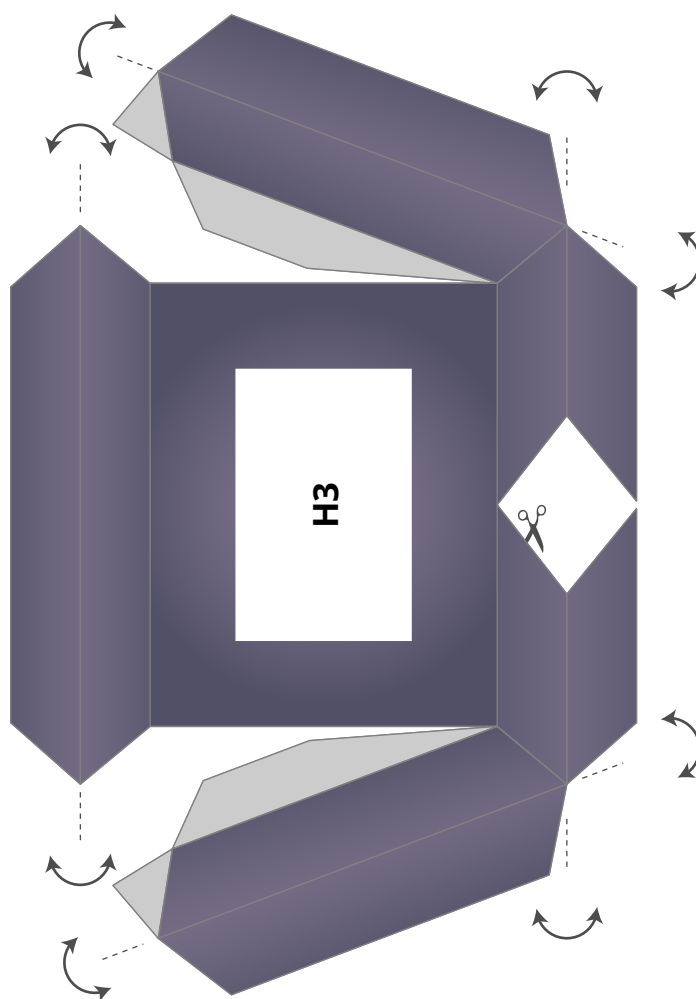


9.



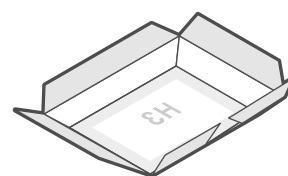






1

Corte, dobre e cole



2

Dobre as peças laterais e cole-as à parte interna

