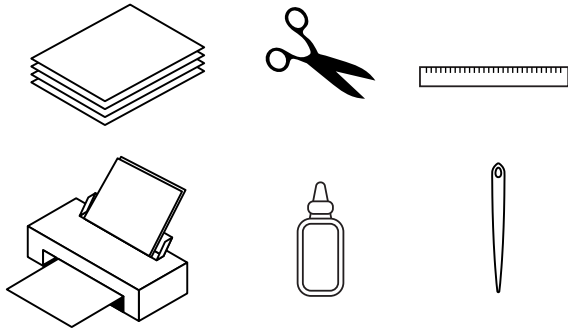




# NARUTO MINI FOLDABLE

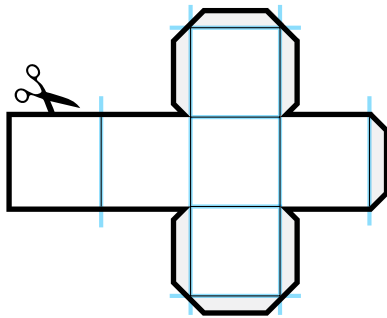


# HOW TO BUILD



## What you need:

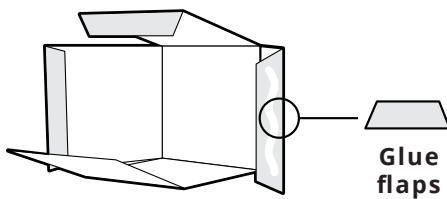
- A4 / US letter paper or cardstock  
Recommended paper thickness:  
**120gsm - 160gsm**
- Printer
- Scissors or cutter
- Craft glue
- Folding bone or thick needle
- Ruler



## 1. Print, Score & Cut

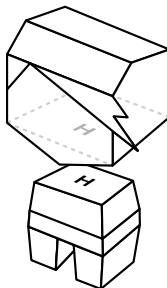
Print the pattern. Using a folding bone or a thick sewing needle and a ruler, score along the folding lines (illustrated in blue) so you can easily fold the pieces.

Now cut the pattern pieces along the outer edge.



## 2. Fold & Glue

Fold and glue each building block of the figure separately. Apply the glue on the glue flaps as shown in the illustration.

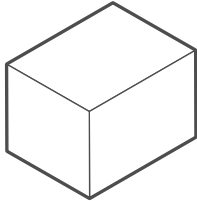


## 3. Assembly

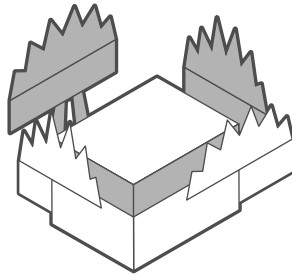
Put all the individual pieces together. Refer to the small labels that indicate which piece goes where and assemble the figure in the correct order.

# ORDER OF ASSEMBLY

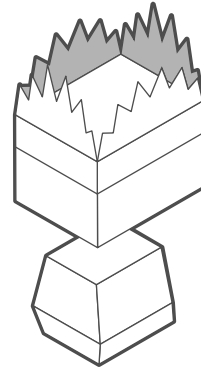
1.



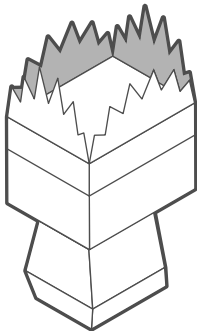
2.



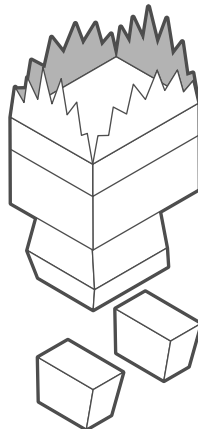
3.



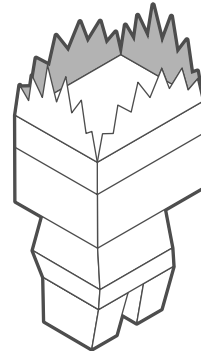
4.



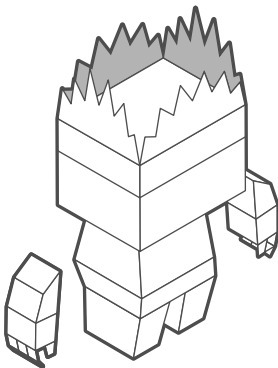
5.



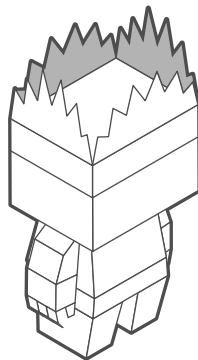
6.



7.

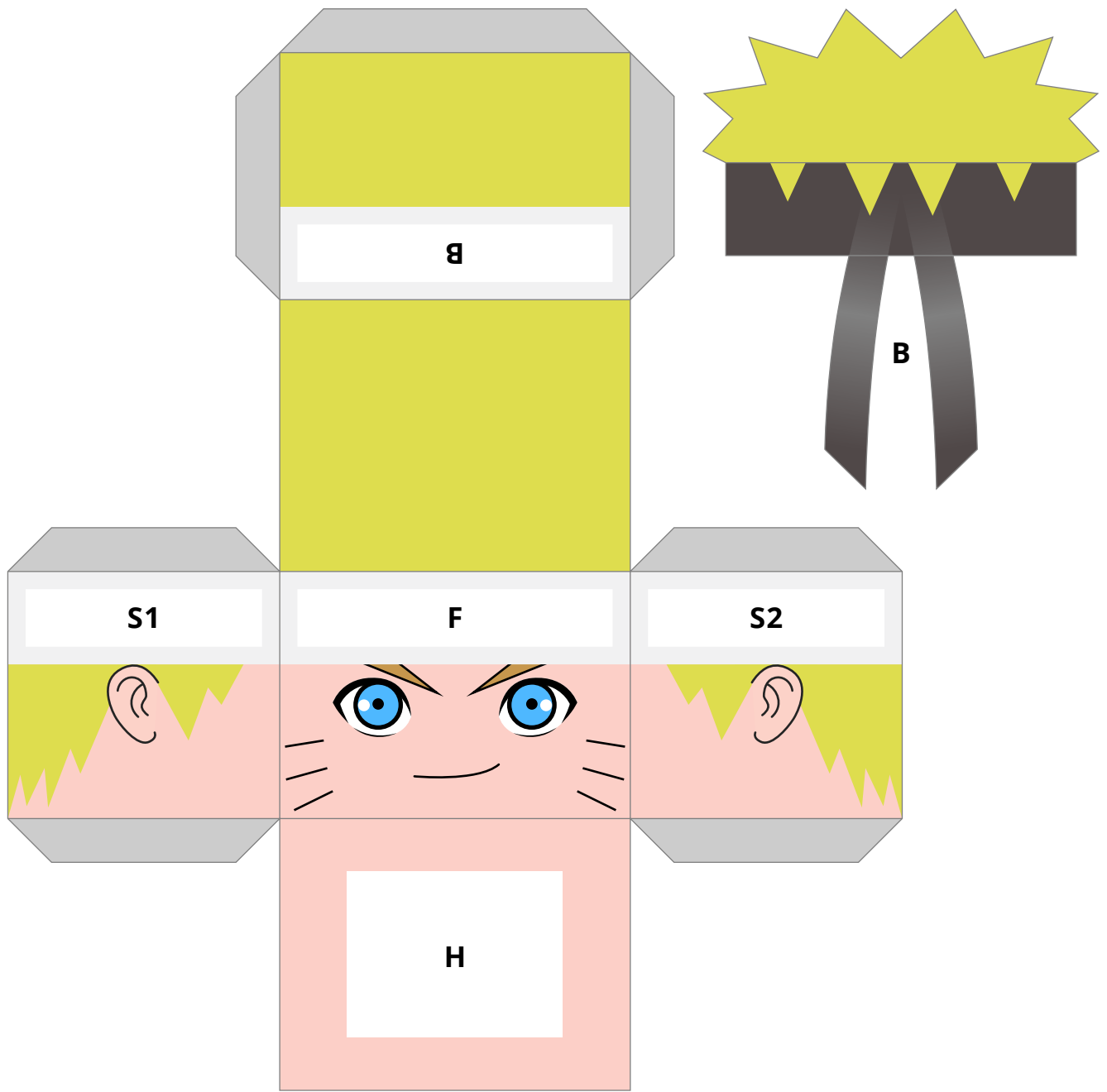


8.

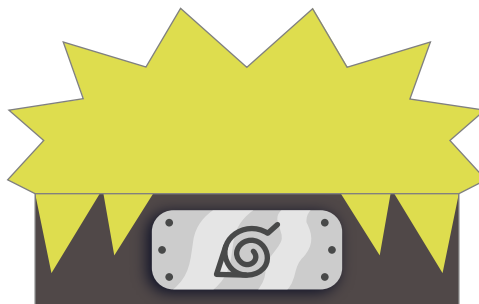


9.





**S1**



**F**



**S2**

