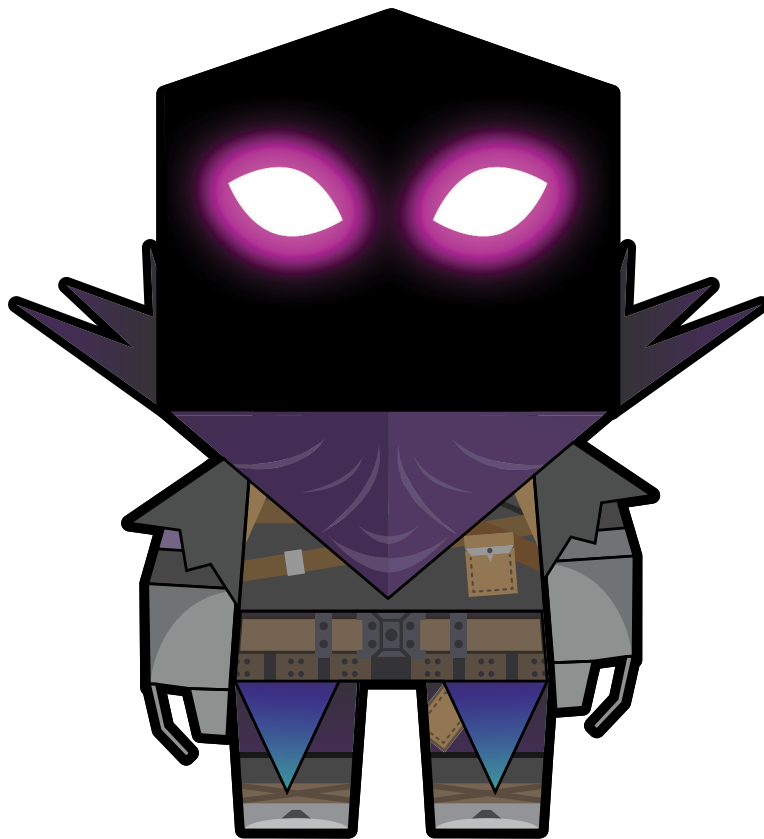


FORTNITEMARES



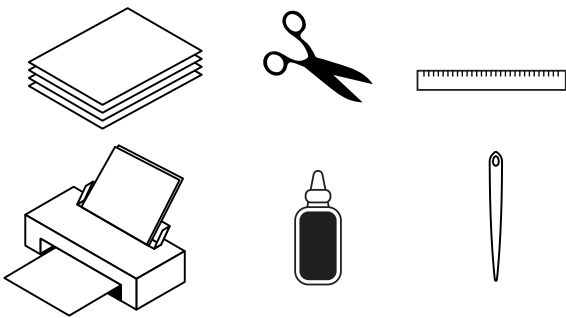
#MYFORTNITEMARES

**RAVEN
MINI-FOLDABLE**

FORTNITEMARES

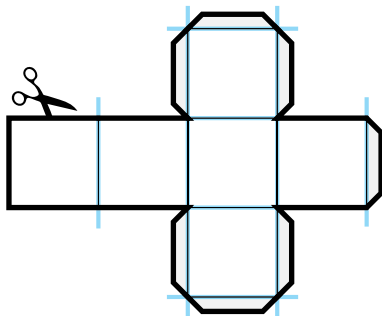
DIFFICULTY LEVEL: VERY EASY
TIME REQUIRED: 40-60 MIN

HOW TO BUILD



WHAT YOU NEED:

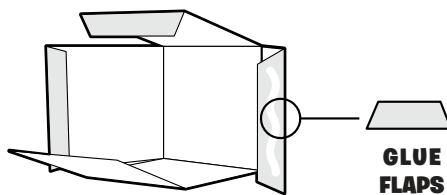
- A4 / US LETTER PAPER OR CARDSTOCK
- RECOMMENDED PAPER THICKNESS:
120GSM - 160GSM
- PRINTER
- SCISSORS OR CUTTER
- CRAFT GLUE
- FOLDING BONE OR THICK NEEDLE
- RULER



1. PRINT, SCORE & CUT

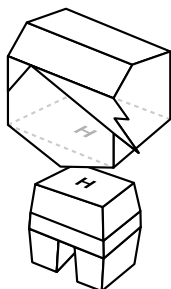
PRINT THE PATTERN. USING A FOLDING BONE OR A THICK SEWING NEEDLE AND A RULER, SCORE ALONG THE FOLDING LINES (ILLUSTRATED IN BLUE) SO YOU CAN EASILY FOLD THE PIECES.

NOW CUT THE PATTERN PIECES ALONG THE OUTER EDGE.



2. FOLD & GLUE

FOLD AND GLUE EACH BUILDING BLOCK OF THE FIGURE SEPARATELY. APPLY THE GLUE ON THE GLUE FLAPS AS SHOWN IN THE ILLUSTRATION.



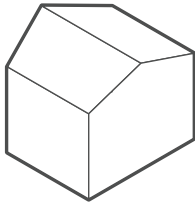
3. ASSEMBLY

PUT ALL THE INDIVIDUAL PIECES TOGETHER. REFER TO THE SMALL LABELS THAT INDICATE WHICH PIECE GOES WHERE AND ASSEMBLE THE FIGURE IN THE CORRECT ORDER.

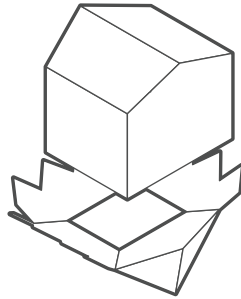
FORTNITEMARES

ORDER OF ASSEMBLY

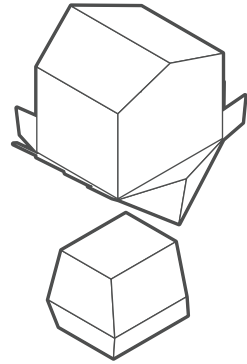
1.



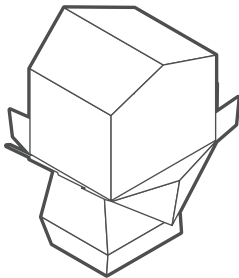
2.



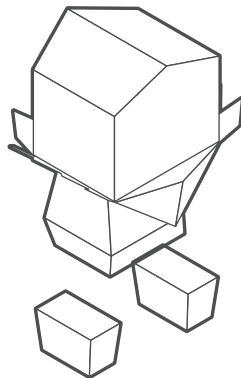
3.



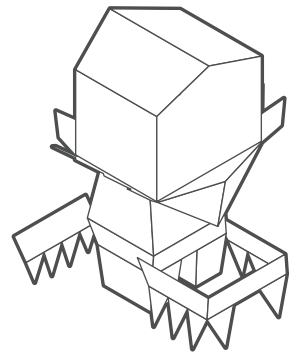
4.



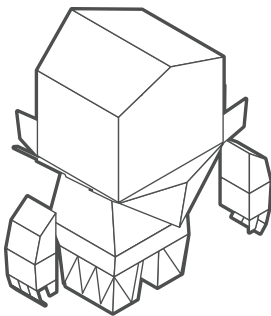
5.



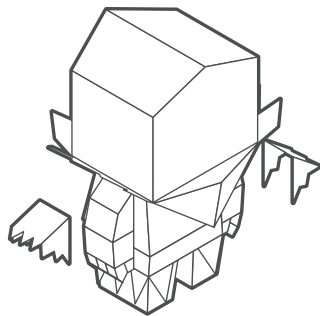
6.



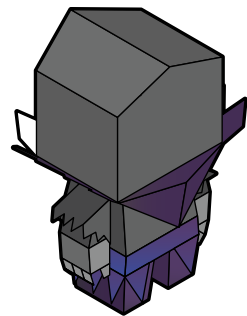
7.



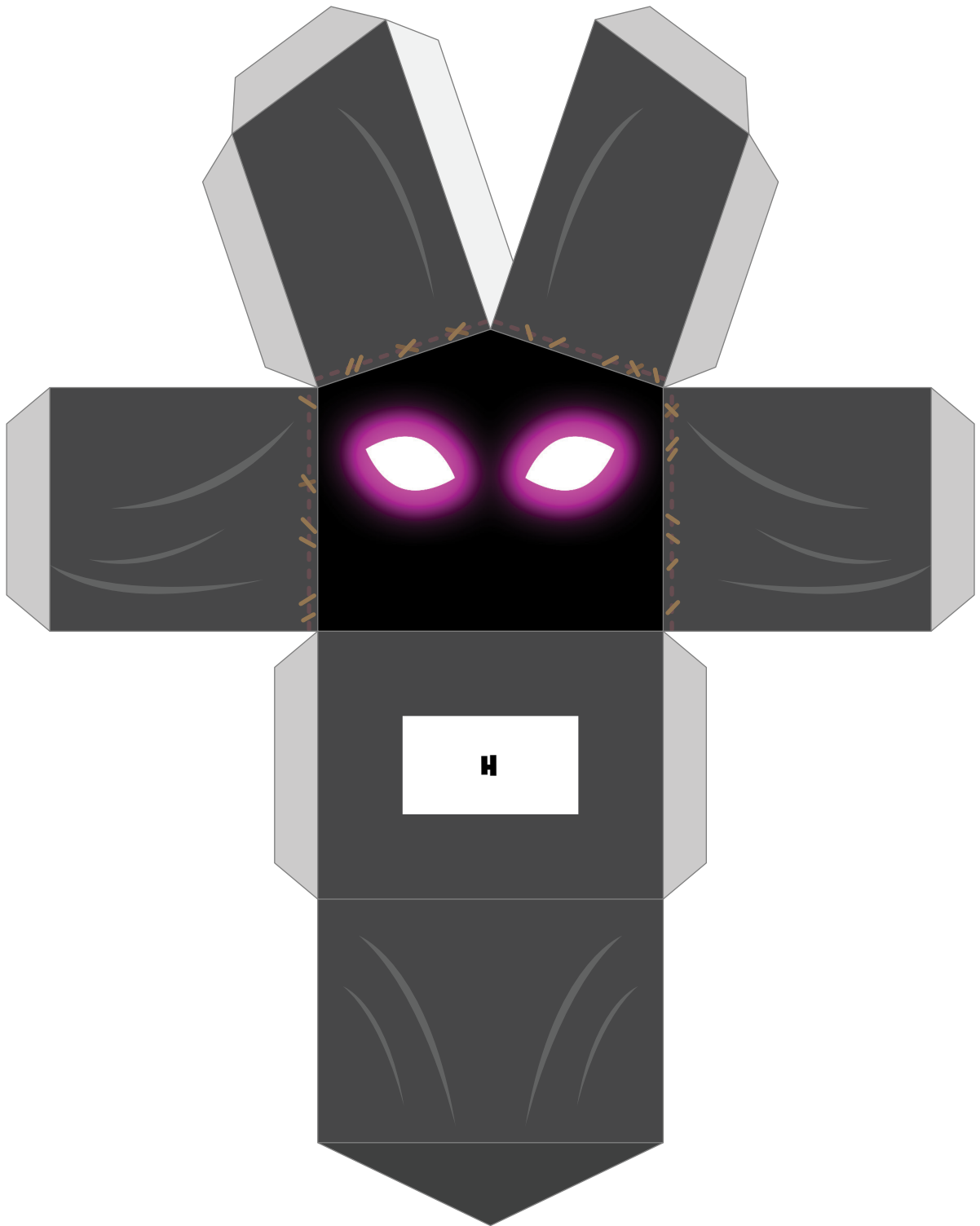
8.



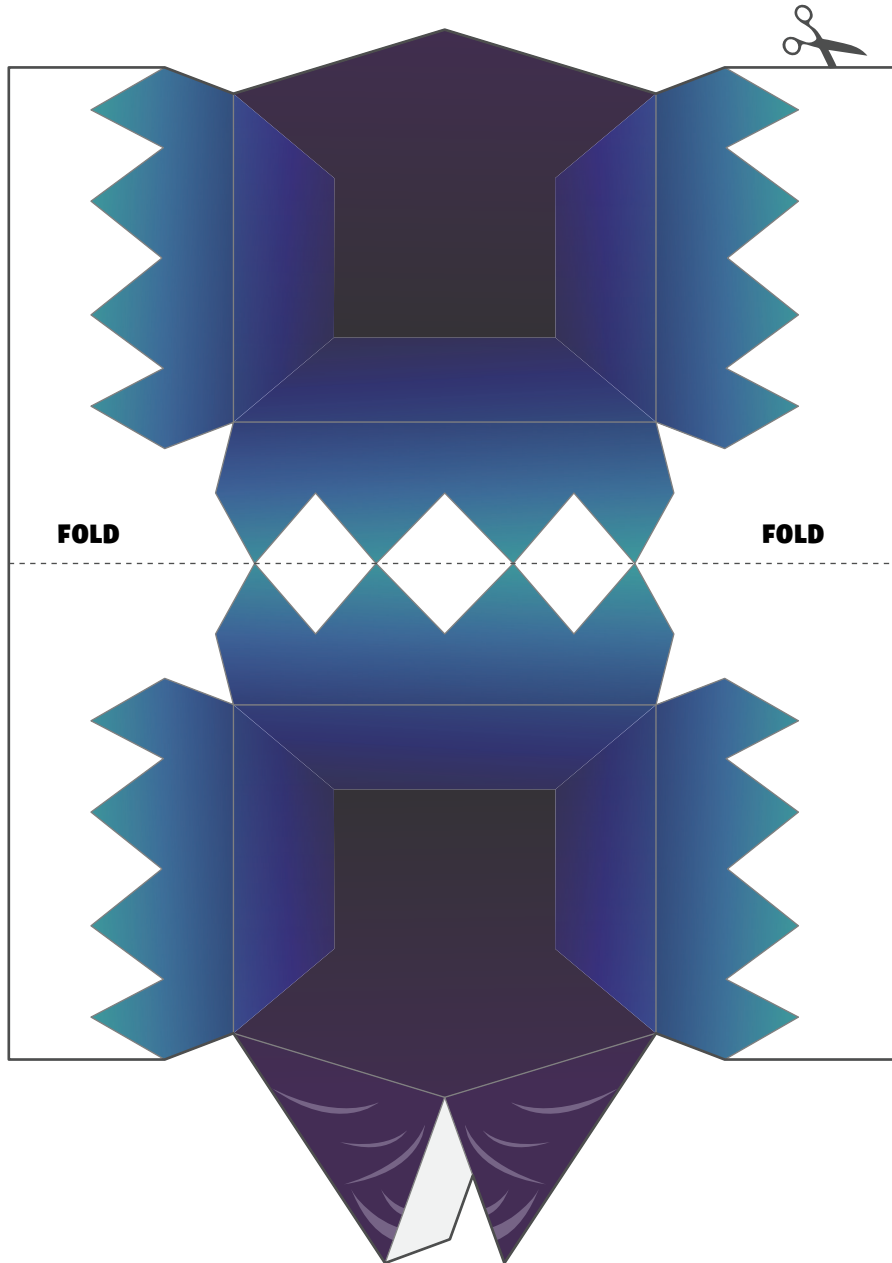
9.



FORTNITEMARES

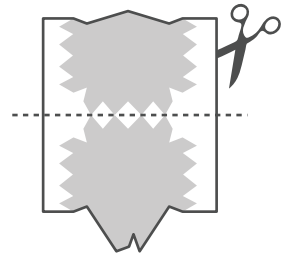


FORTNITEMARES



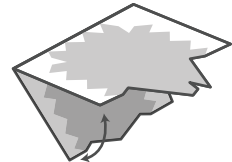
1

**CUT OUT
RECTANGLE FIRST**



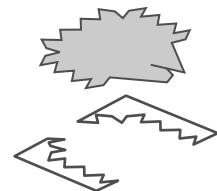
2

**FOLD AND GLUE BOTH
SIDES TOGETHER**

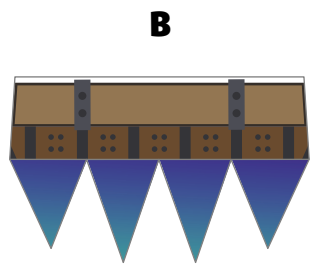
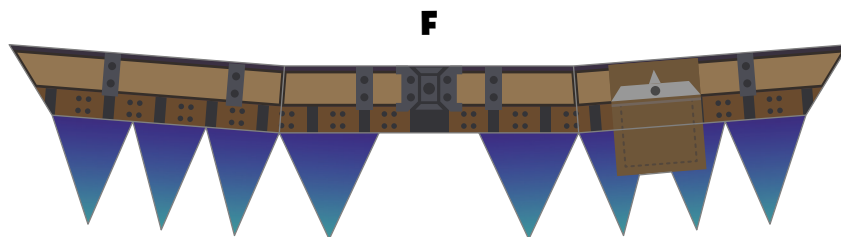
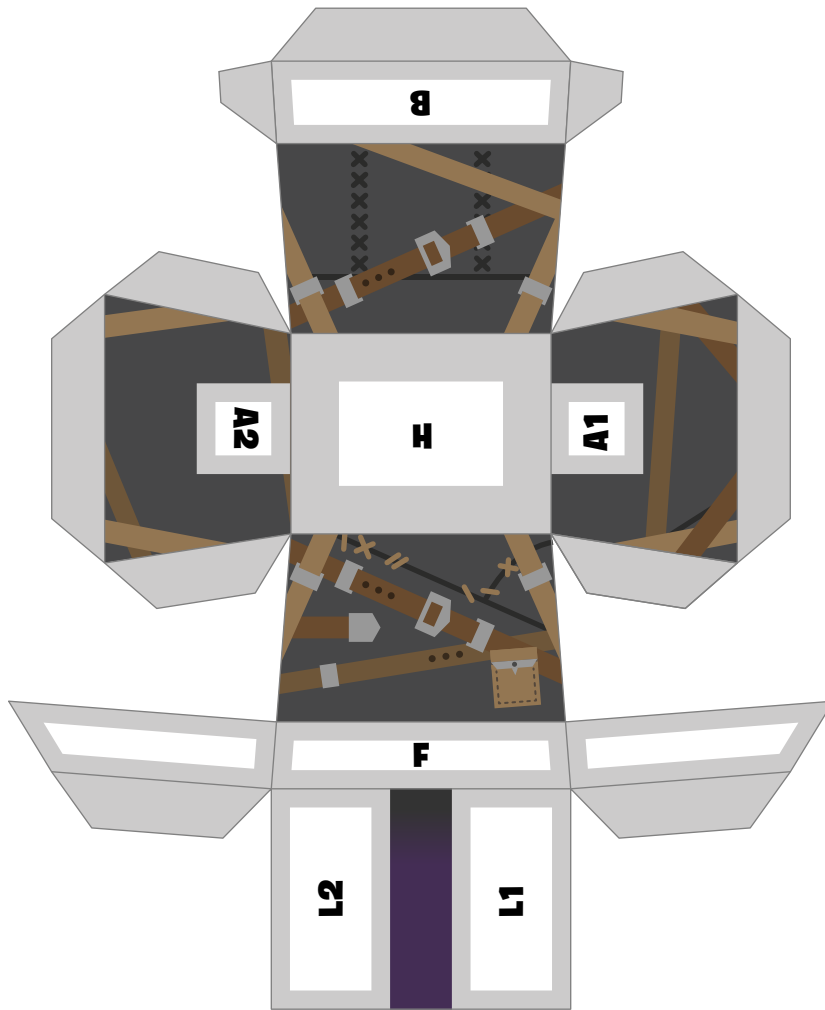


3

CUT AND BUILD



FORTNITEMARES



FORTNITEMARES

