

FORTNITE®

#SPRINGBREAKOUT

WEBSTER MASK



DIFFICULTY LEVEL: MEDIUM
TIME REQUIRED: 2 - 2.5 HOURS

REQUIRED MATERIALS

- Printer
- A4 or US letter size printer paper
- Spray adhesive or a glue stick
- Scissors
- Glue (or Clear tape)
- Folding bone or thick sewing needle
- Ruler
- Elastic band or string

- 11 sheets of card stock
- 4 sheets yellow - (300gsm/110lb cover)
- 2 sheets orange - (300gsm/110lb cover)
- 1 sheet white - (300gsm/110lb cover)
- 2 sheets purple - (160gsm/60lb)
- 1 sheet blue - (160gsm/60lb)
- 1 sheet black or paper - (160gsm/60lb)

A SPECIAL NOTE ABOUT PRINTING

This mask is designed to be printed on US Letter paper (8 1/2" x 11") or A4 paper (210mm x 297mm).

Make sure that the "print to scale" option is blank/not checked on your printer settings to ensure that the pages print at the intended size.

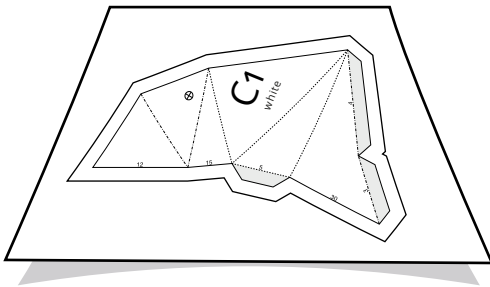
You can check the scale by measuring the printed line on the first pattern page with a ruler.

The weight [GSM] of the cardstock is our recommendation, but any other thickness will work too.

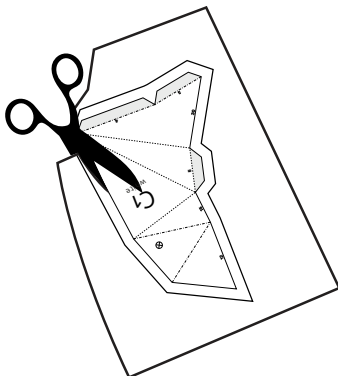
INSTRUCTIONS FOR PRINTING AND FOLDING

If your printer can handle thicker paper, print directly on your cardstock and skip step 1. When using thicker or black cardstock, we recommend printing on thin paper and adhering the mask pieces to cardstock. Both methods will result in the printed lines and pattern guide numbers being hidden on the inside of the finished mask.

(1) Print your mask pieces on printer paper. Cut the pieces out roughly and glue them to the back of your cardstock with a spray adhesive or a glue stick.

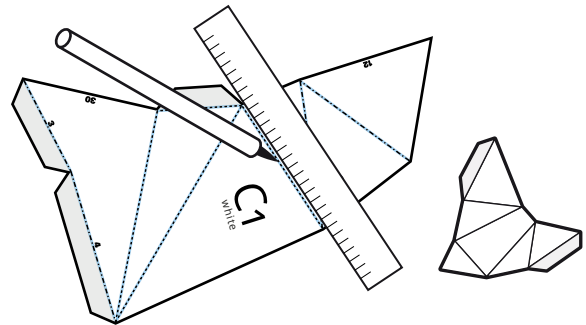


(2) Cut out the pattern pieces along the solid cutting lines.

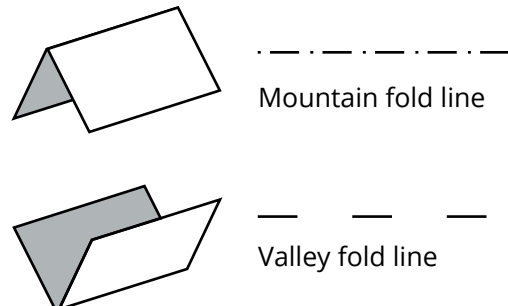


Note: the dashed lines are folding lines, make sure not to cut them!

(3) Using a folding bone or a thick sewing needle and a ruler, score along the folding lines.



(4) Refer to the diagram below and fold along the creases, either bringing the two edges towards you (Valley Fold) for the plain dashed line folds or away from you (Mountain Fold) for the dot/dashed line folds.

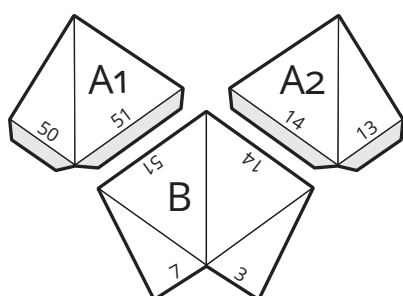


MASK ASSEMBLY INSTRUCTIONS



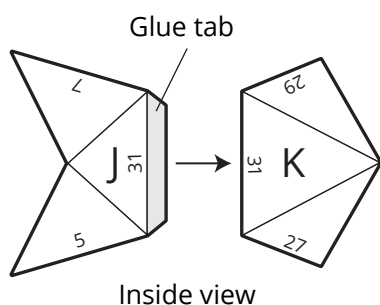
Lay out the pieces

Each piece is labelled. Place the pieces in alphabetical order. Note: symmetrical pieces have the same letter but a different number. (A1 < symmetrical > A2).



Find matching pieces

Start with piece A and piece B. Each has small numbers along its edges. A number from piece A will be an exact match with a number from piece B. Locate the glue tab below one of the matching numbers.



We recommend using one of the following methods for attaching the mask pieces together.

Option 1 / Easy clear adhesive tape

Place a piece of tape on the outside of the pattern covering the joint where the two edges meet. Tape all pieces together.

Pro: easy and fast!

Con: tape is visible from the outside

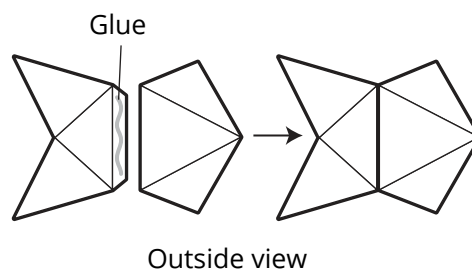


Option 2 / Advanced glue

A thin strip is all you need on the glue tab. Press the glue tab firmly to its matching number. Continue this process for each piece in alphabetical order. The glue tab and number should not be visible from the outside of the mask.

Pro: invisible!

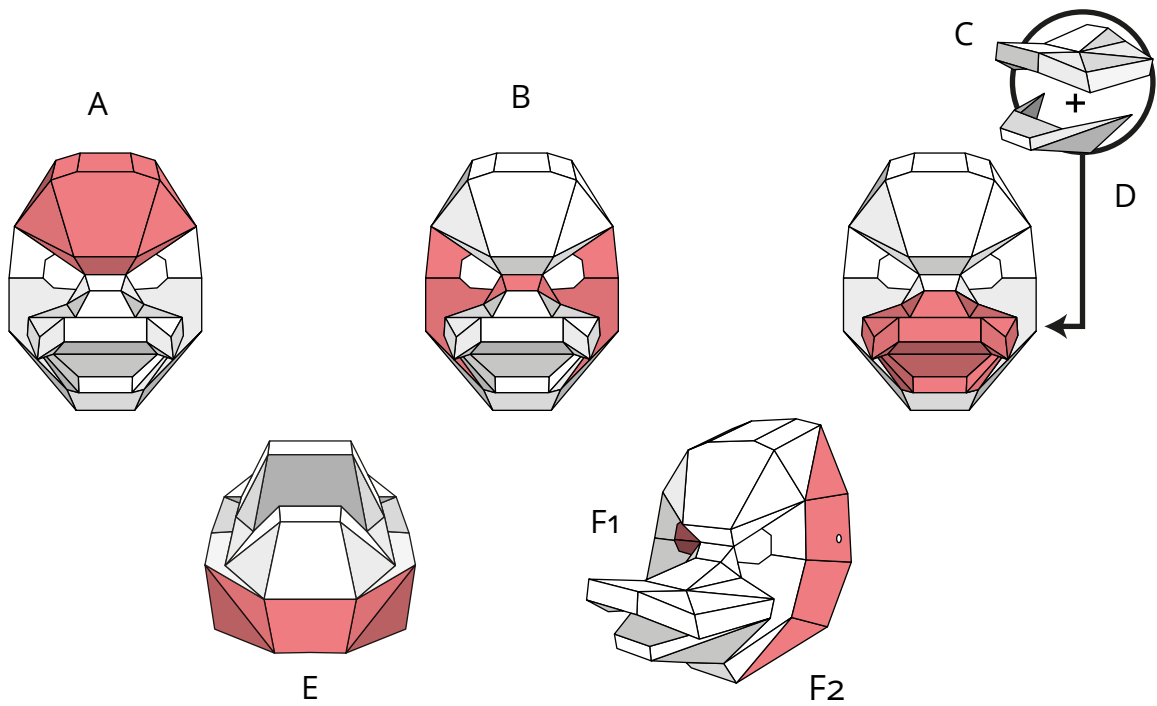
Con: time consuming



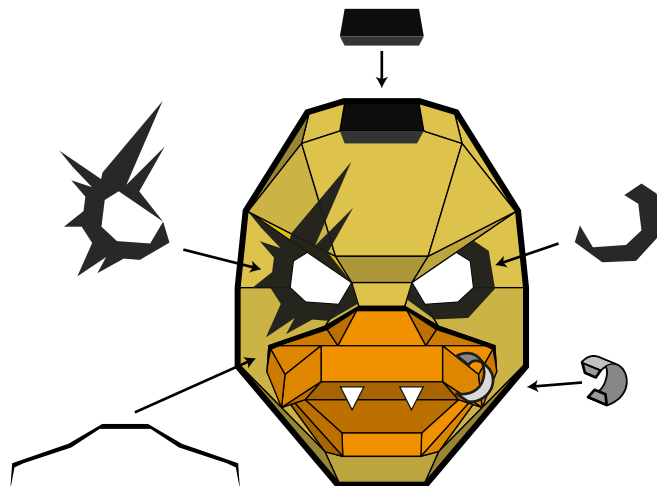
Done!

Now let your creativity flow. You can decorate and color your mask any way you like.

PATTERN GUIDE A



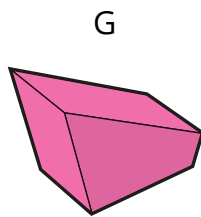
Start with pattern piece A and continue in alphabetical order.



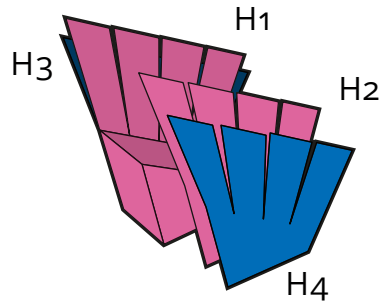
Glue all colored elements like 3D stickers to the mask!
Use thinner cardstock or paper for these elements!

PATTERN GUIDE B

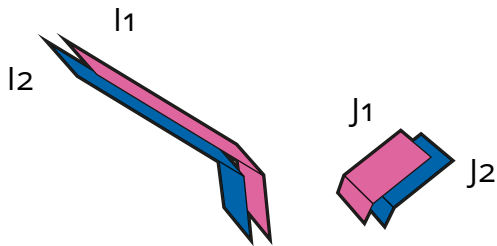
Mohawk



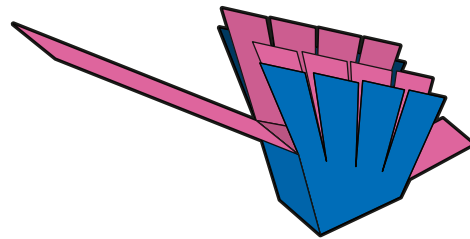
1.
Build the base.



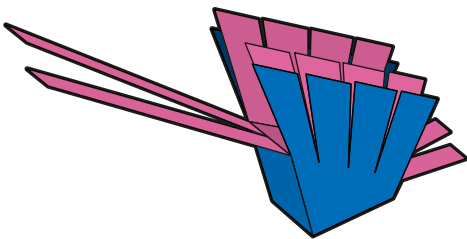
2.
Attach the fringes to both sides of the box.



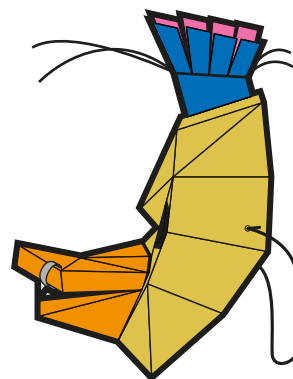
3.
Now glue the long and short
stripes together so they
have a different front
and back color.



4.
Attach the stripes to the
front and the back.

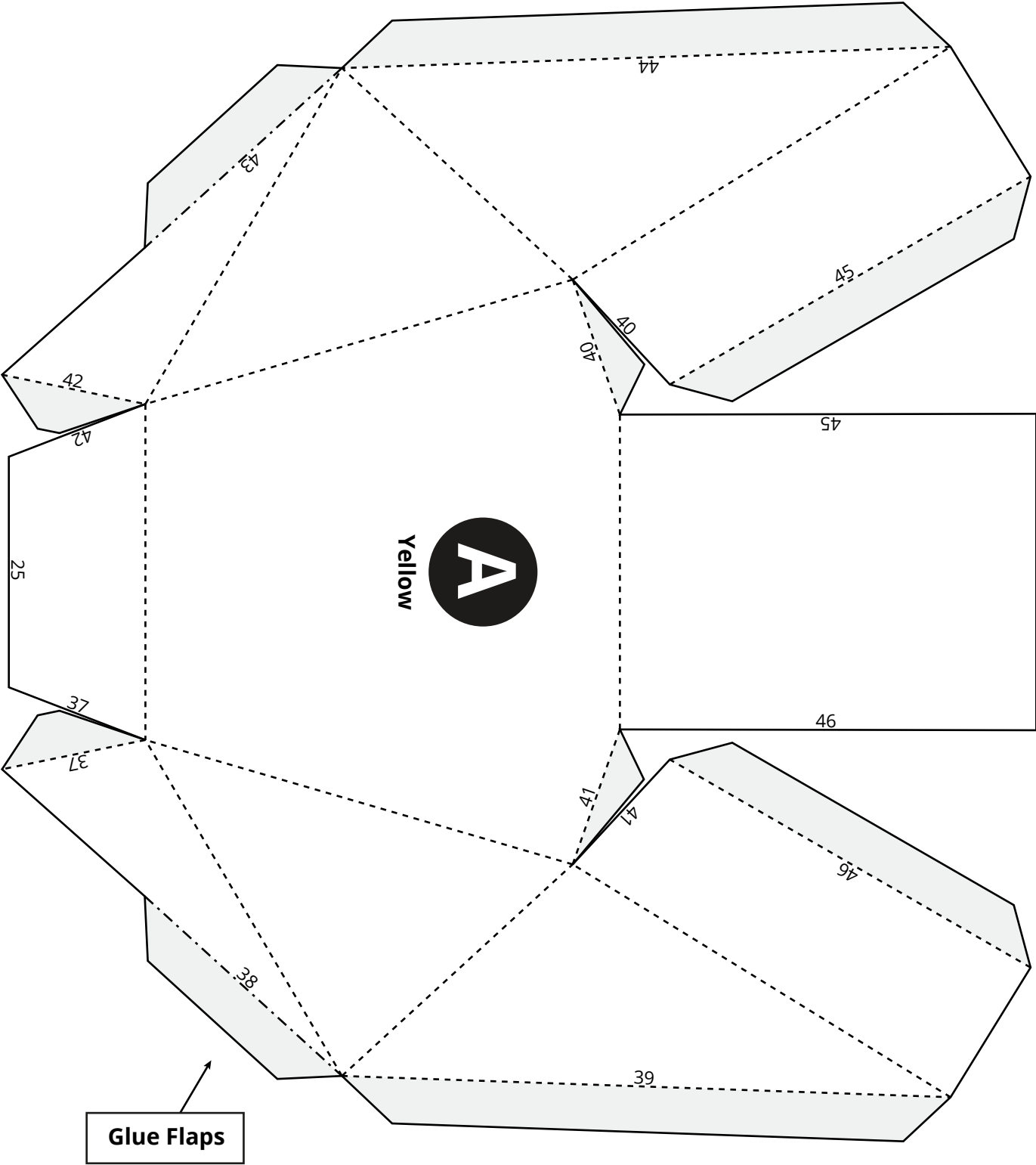


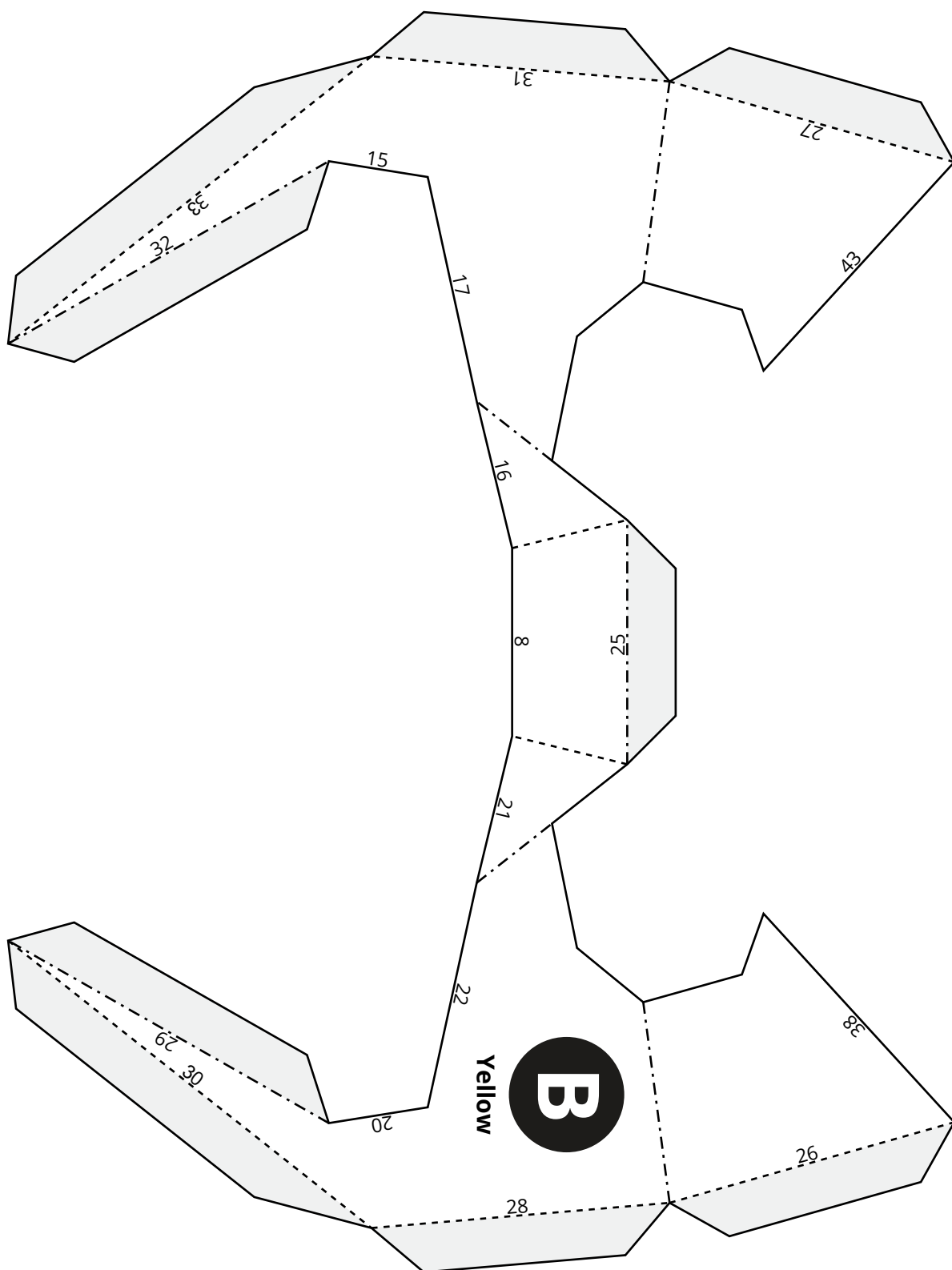
5.
Optional:
Cut the front and back
stripes in half.

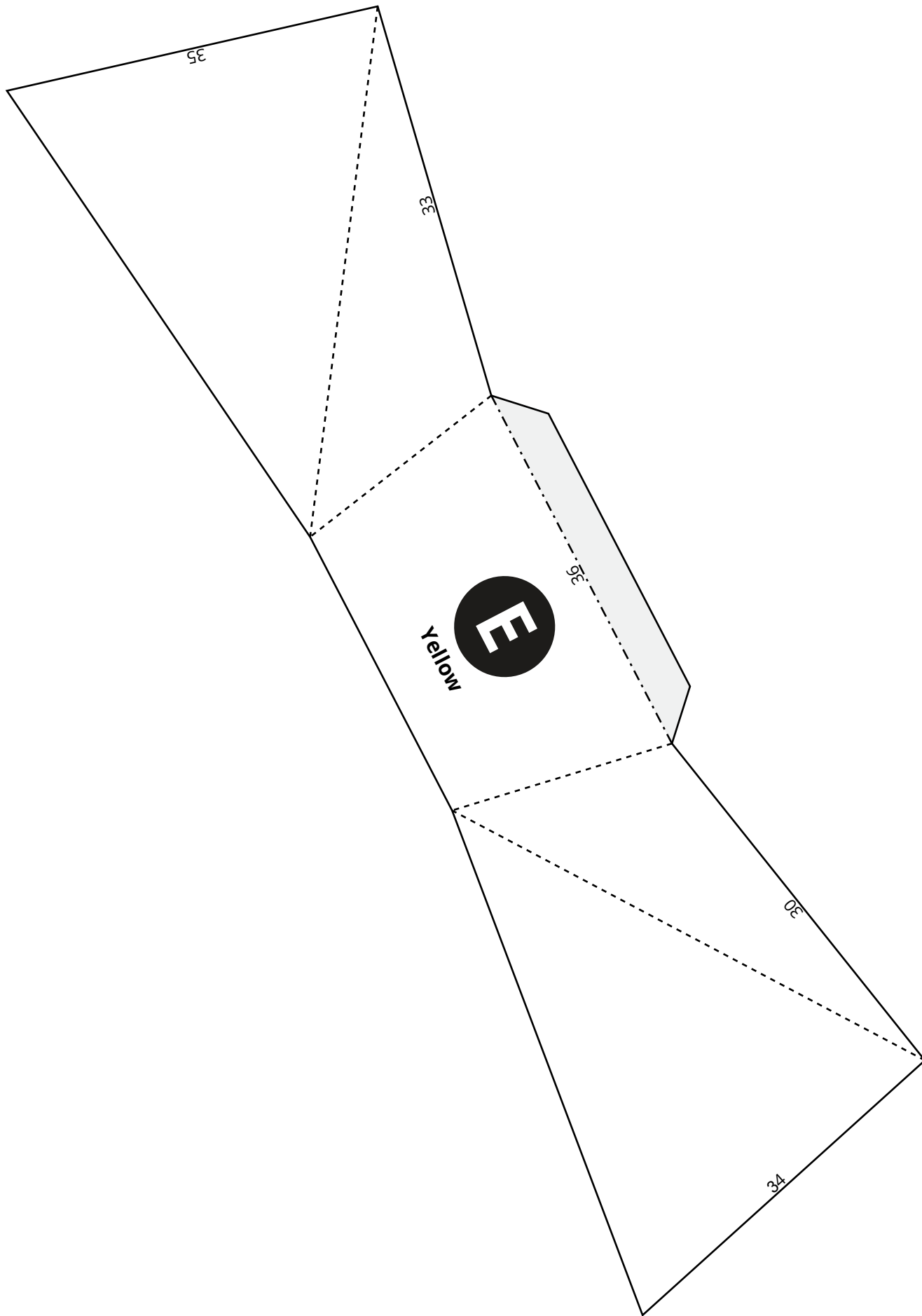


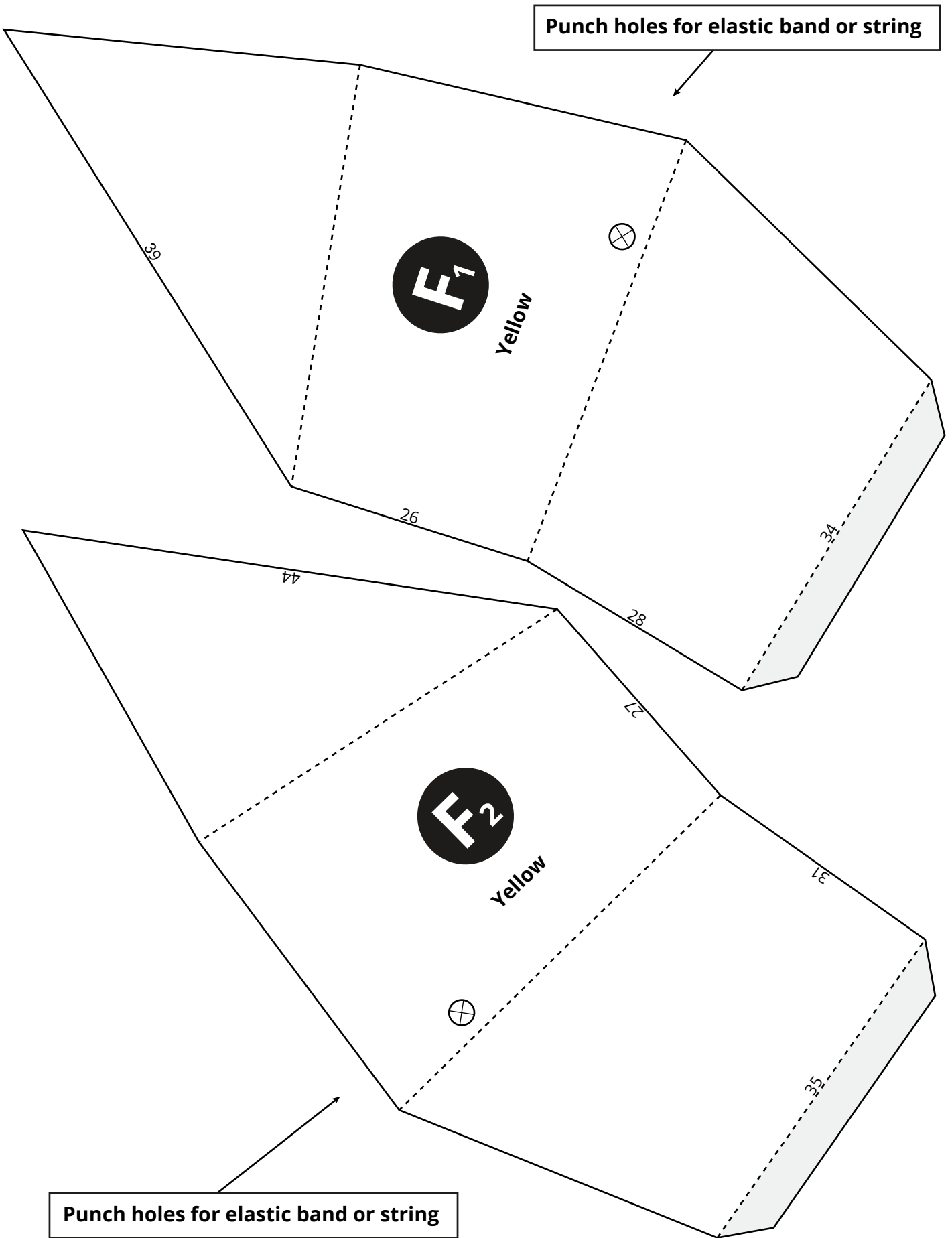
6.
Attach to mask.
Done!

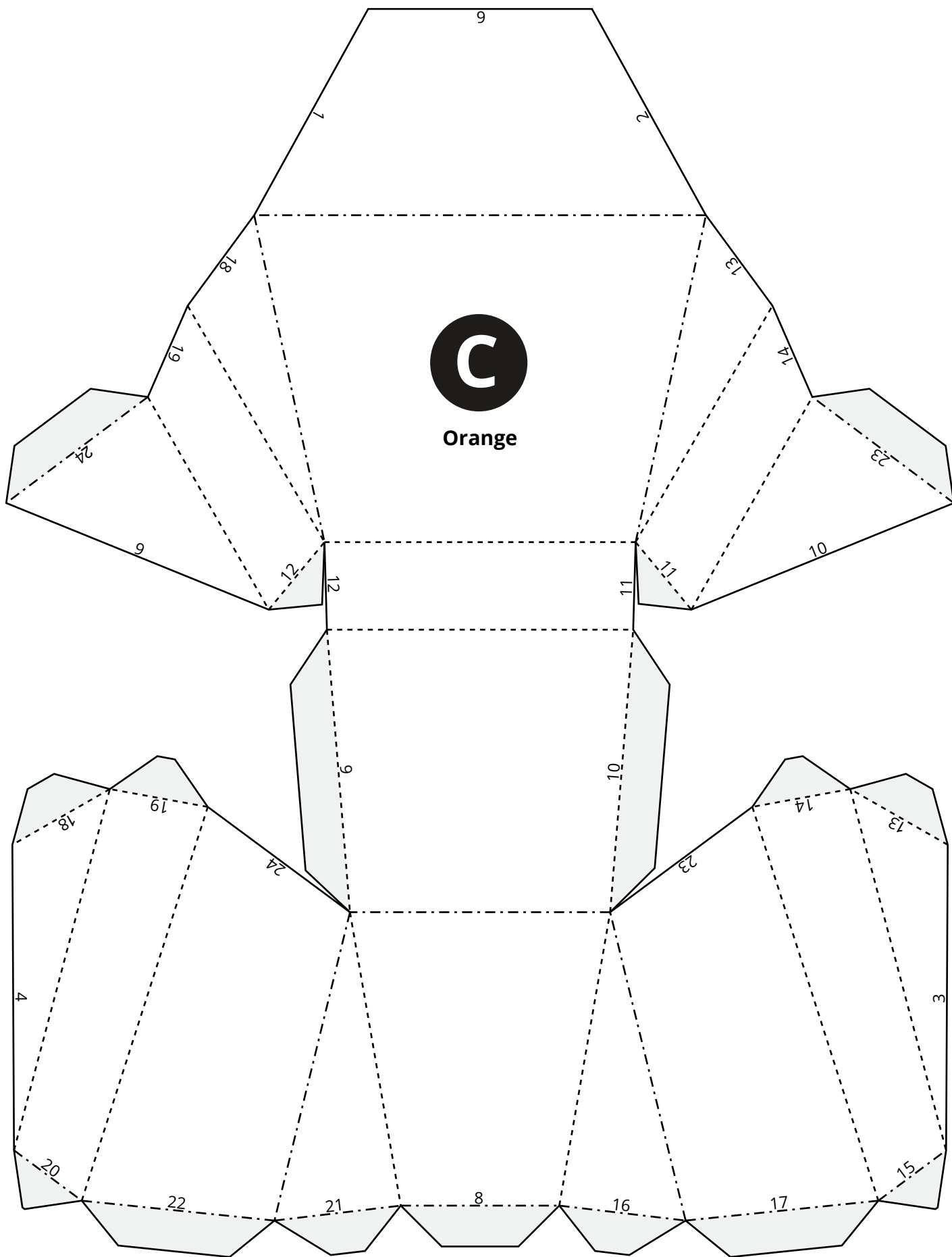
4" (100mm)

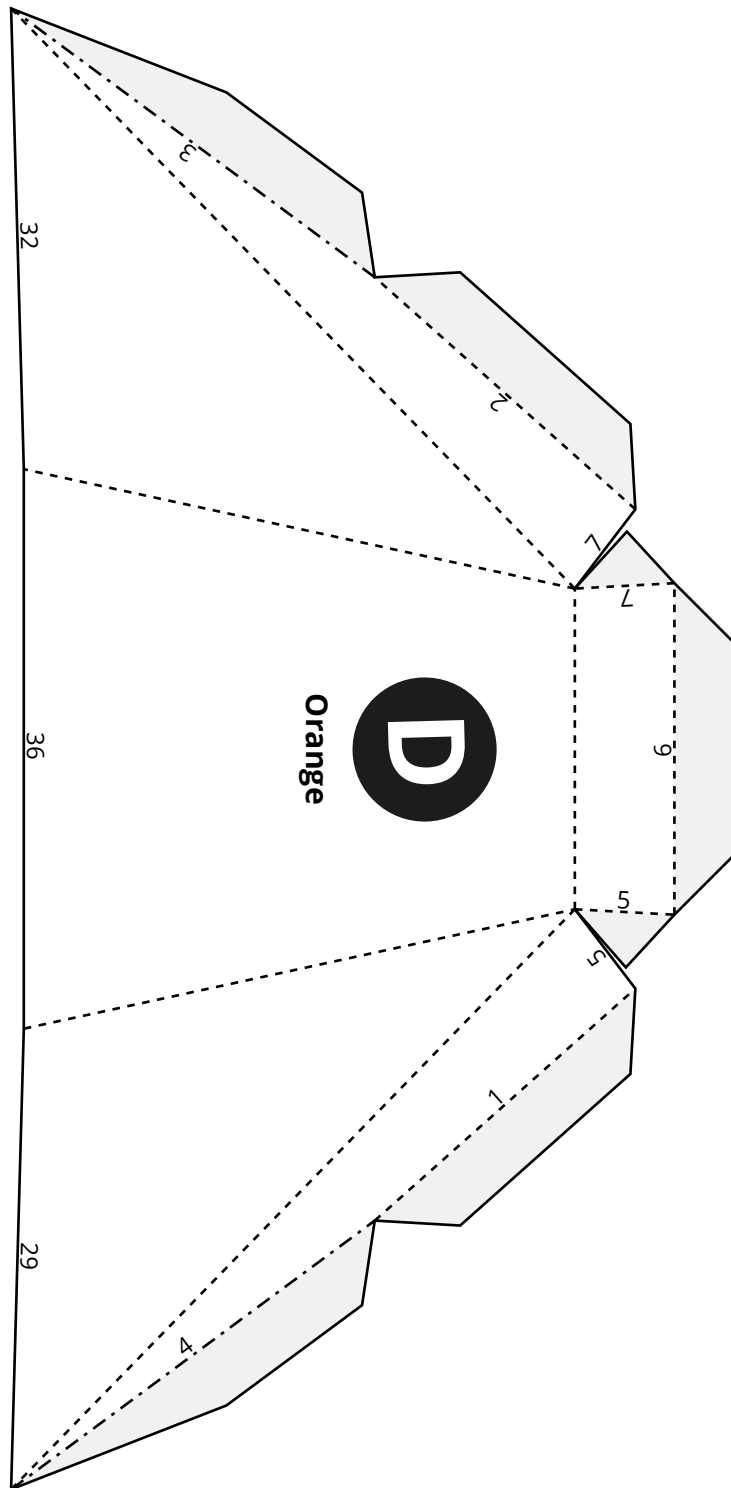








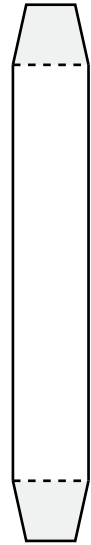
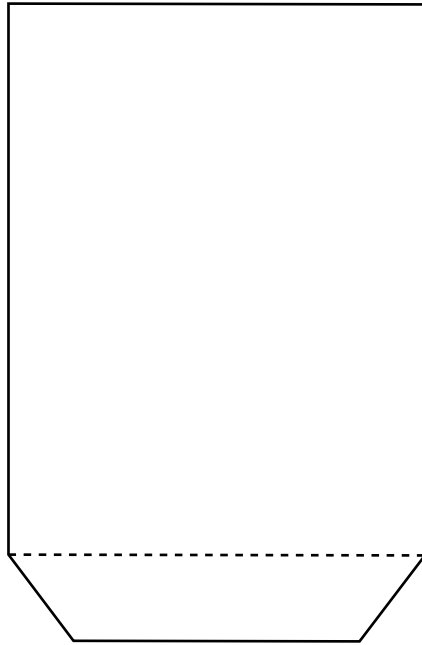
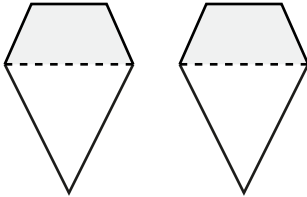




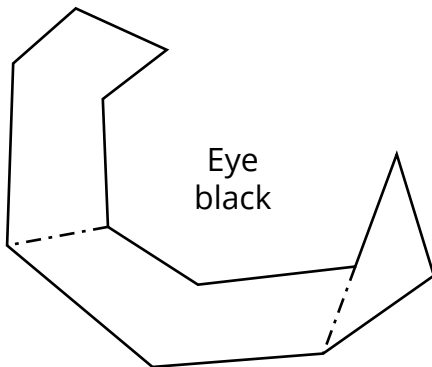
Face option 1
print on thinner cardstock
160 GSM/60 lb

Ring
grey

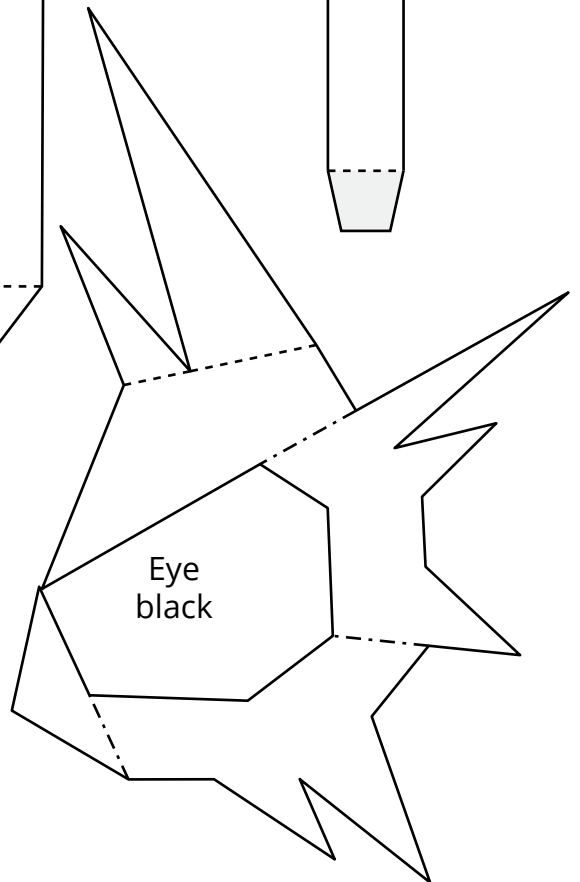
Teeth
white



Forehead
black

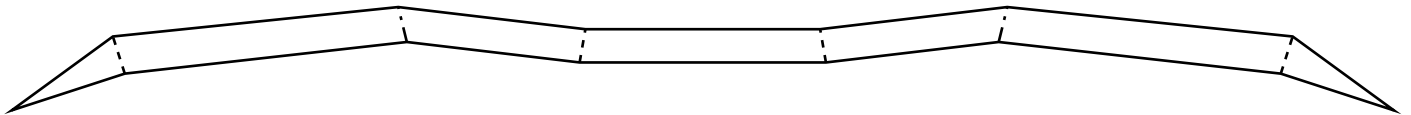


Eye
black



Eye
black

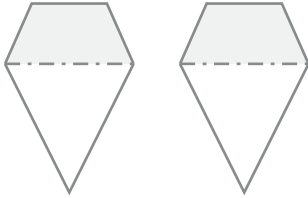
Beak
black



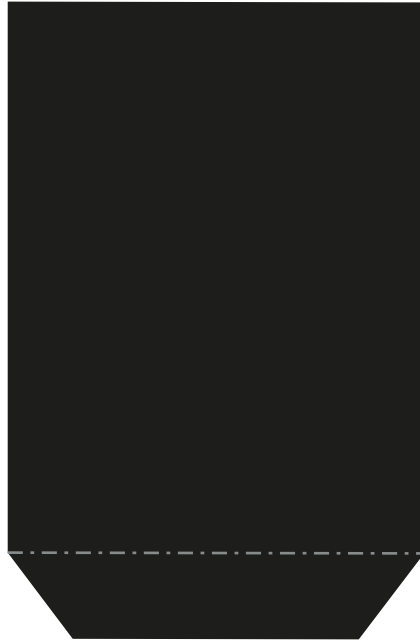
Score all the folding lines before you cut out!
Color these elements yourself!

Face option 2
print on thinner cardstock
160 GSM/60 lb

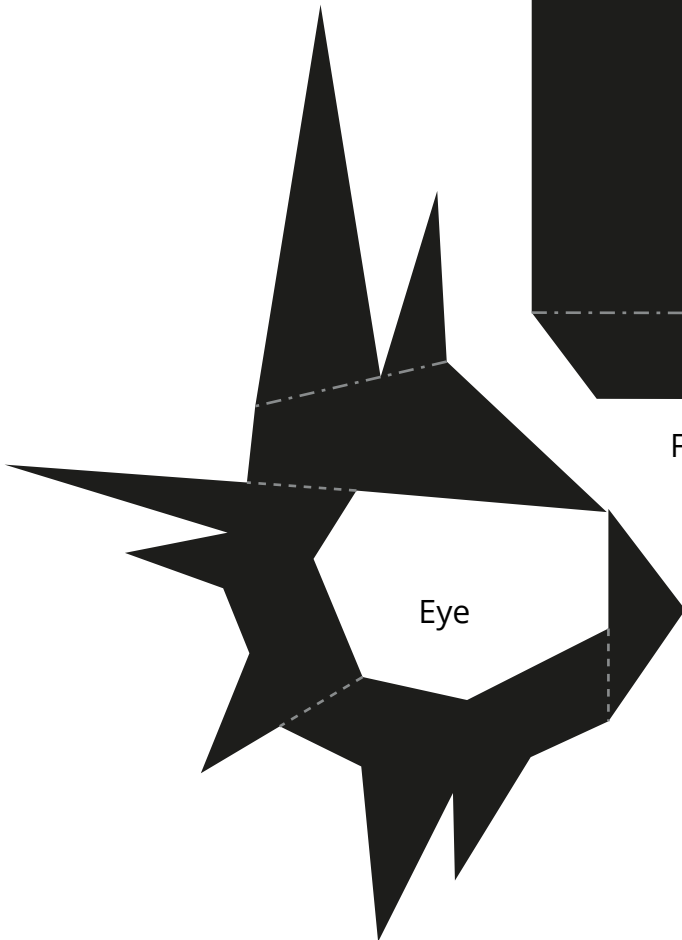
Teeth



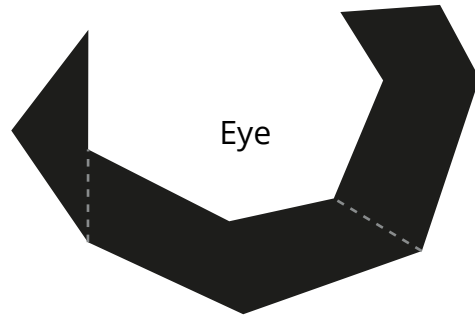
Ring



Forehead



Eye

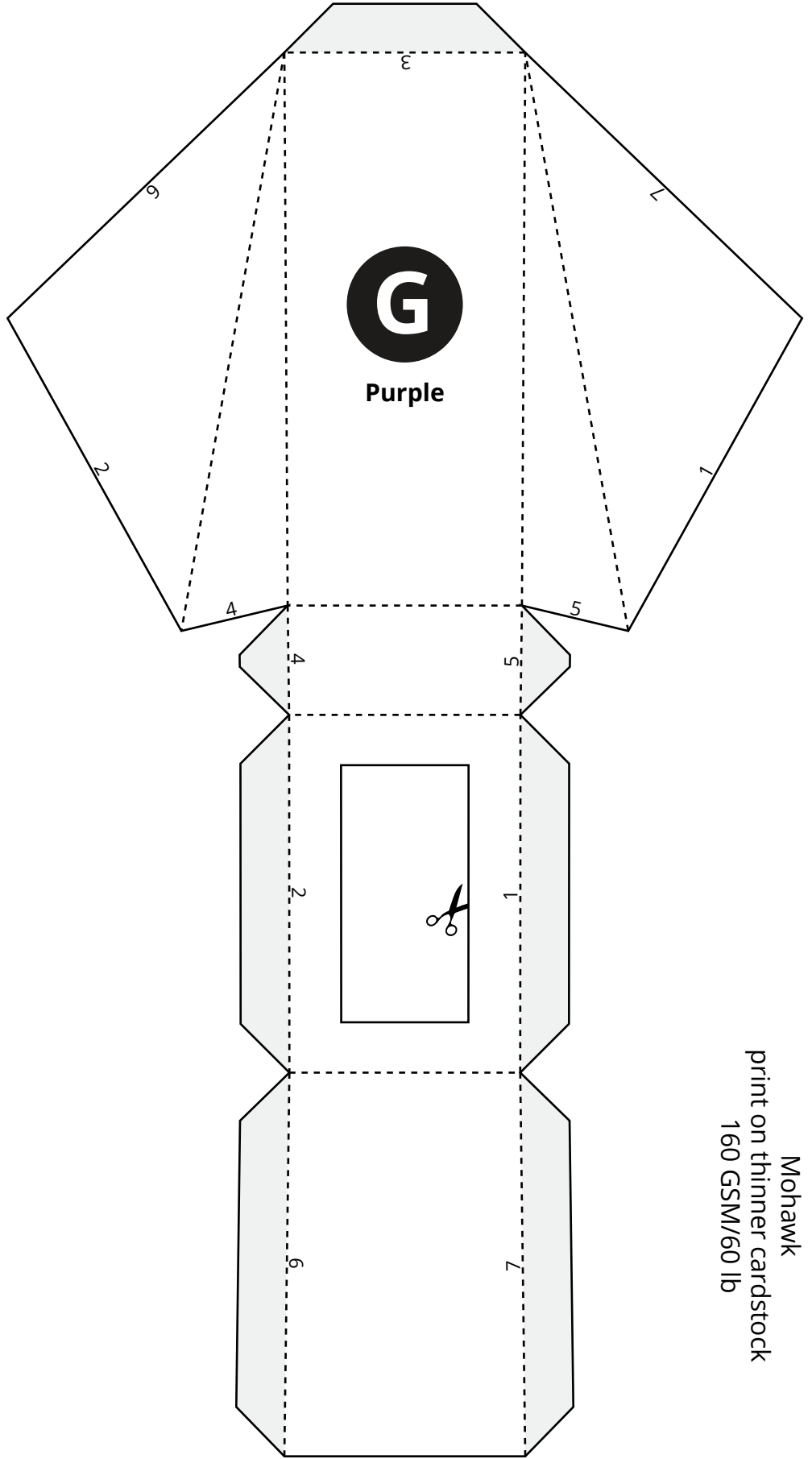
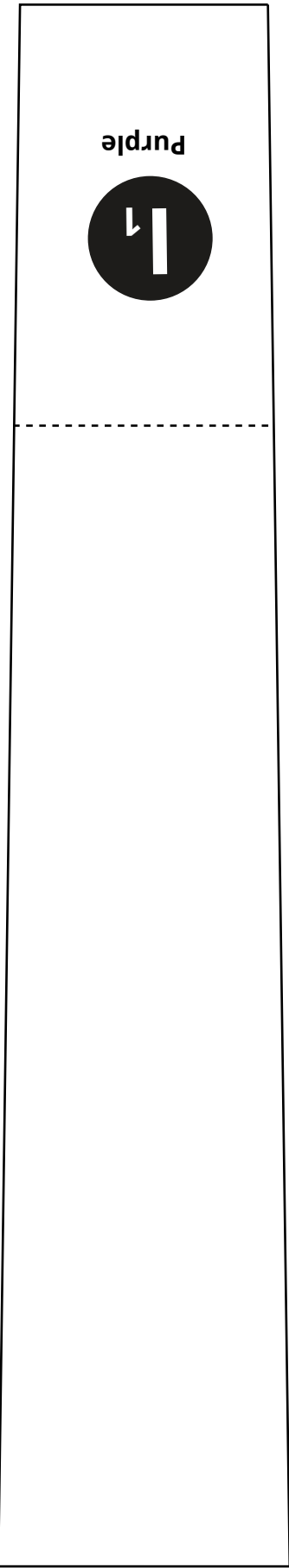


Eye

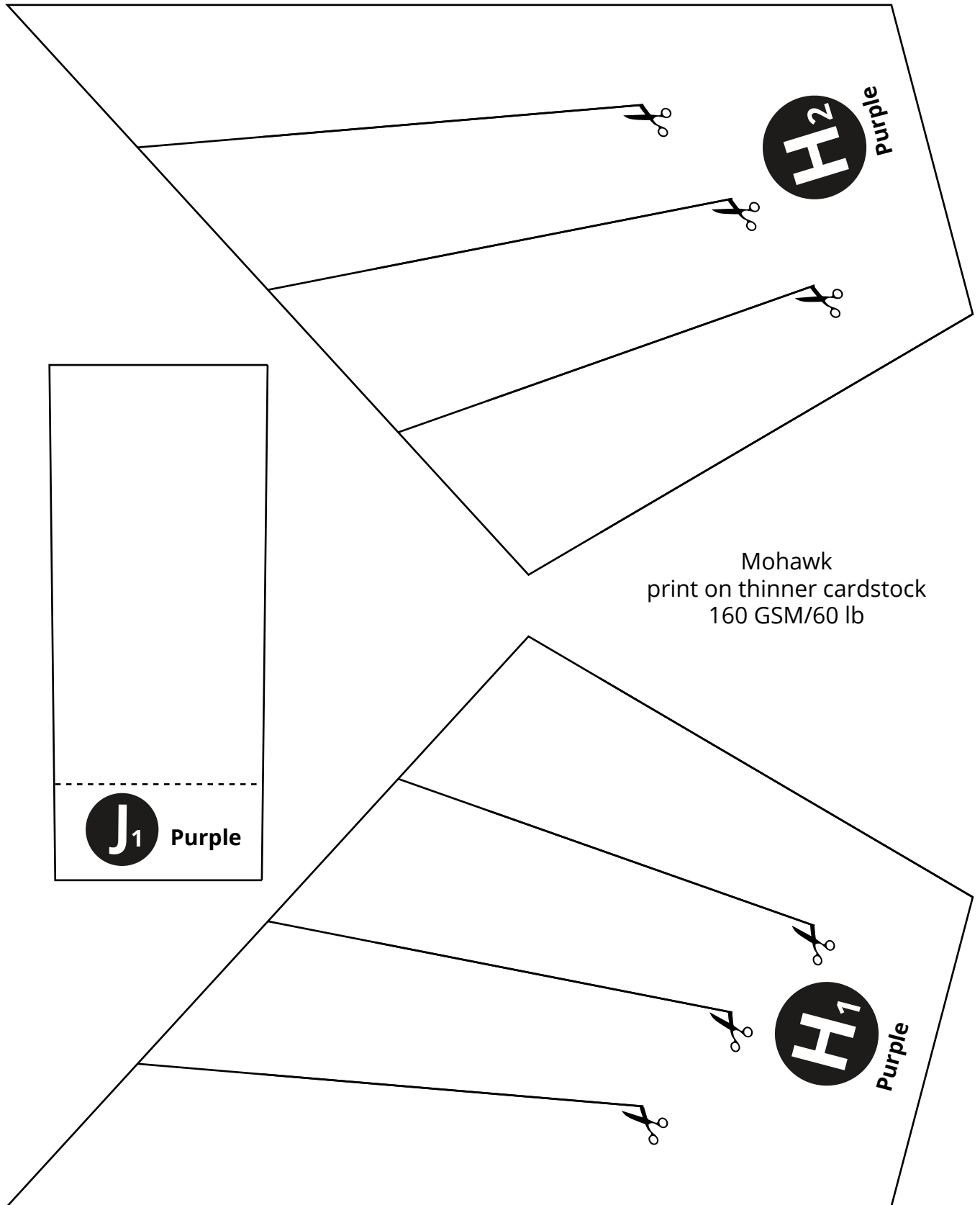
Beak

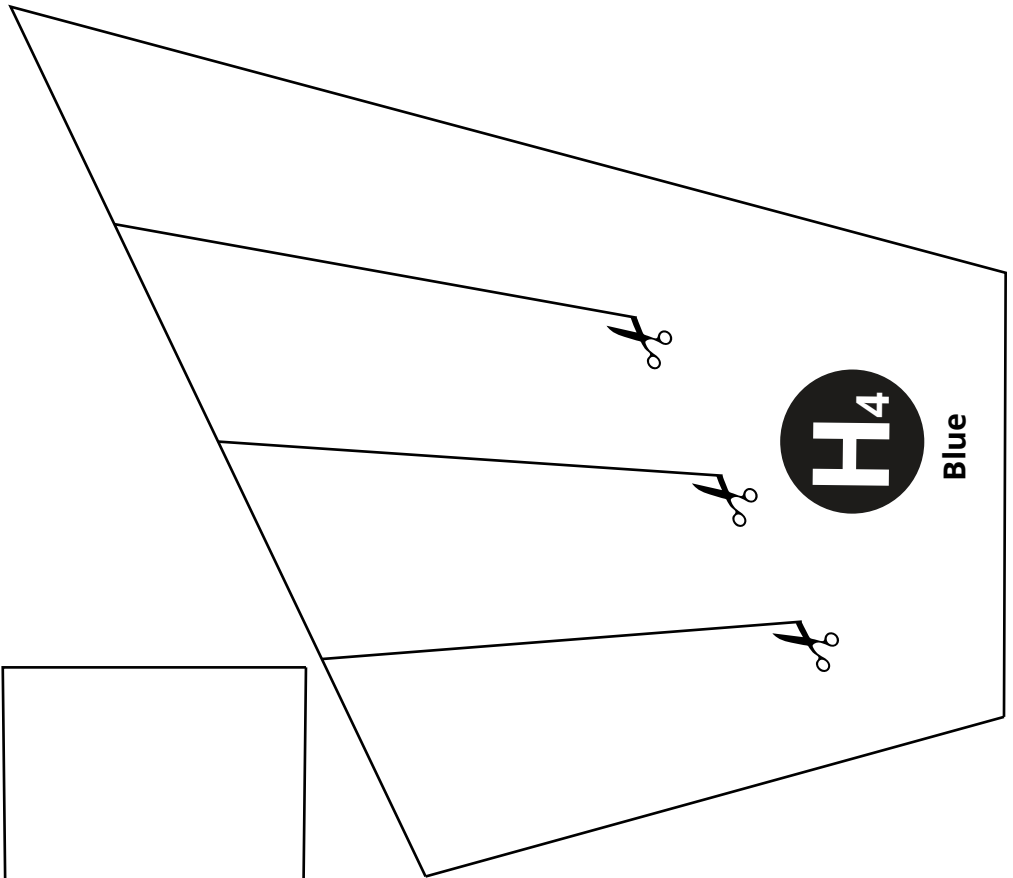
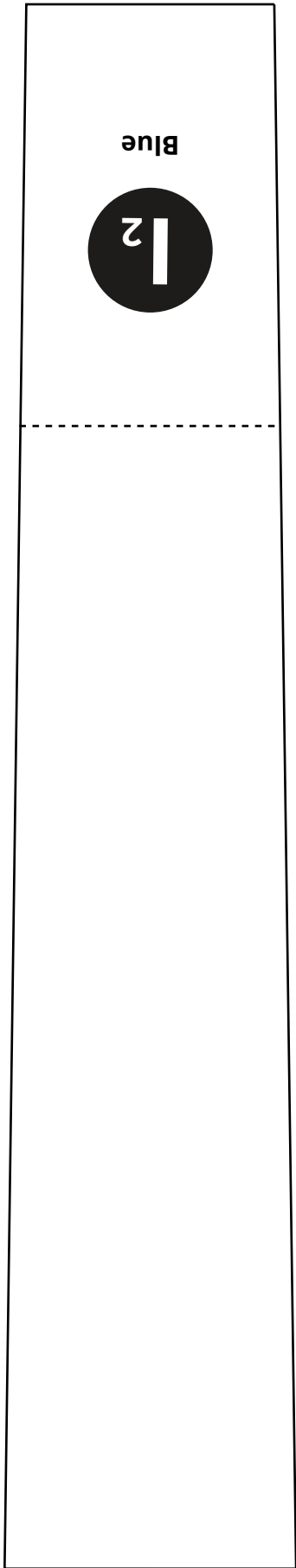


Score all the folding lines before you cut out!
Fold and glue to face!



Mohawk
print on thinner cardstock
160 GSM/60 lb





Mohawk
print on thinner cardstock
160 GSM/60 lb

