

FORTNITEMARES



#MYFORTNITEMARES
ALL-HALLOW'S STEVE
- MEOWSCLES MASK

COLOUR PRINT

DIFFICULTY LEVEL: EASY
TIME REQUIRED: 1 - 1.5 HOURS

REQUIRED MATERIALS

- Printer
- A4 or US letter size cardstock
- Scissors and cutter
- Glue (or clear tape)
- Folding bone or thick sewing needle
- Ruler
- Elastic band or string

6 sheets of cardstock

- 6 sheets - (160-200gsm / 60lb-100lb)

A SPECIAL NOTE ABOUT PRINTING

This mask is designed to be printed on US Letter paper (8 1/2" x 11") or A4 paper (210mm x 297mm).

Make sure that the "print to scale" option is blank/not checked on your printer settings to ensure that the pages print at the intended size.

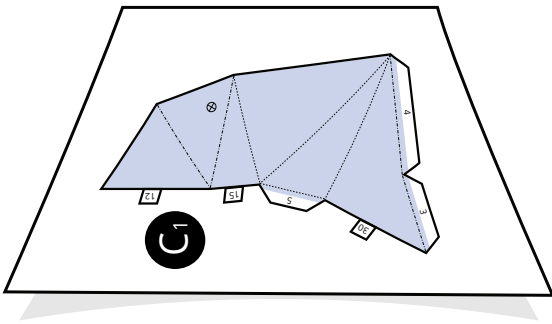
You can check the scale by measuring the printed line on the first pattern page with a ruler.

The weight [GSM] of the cardstock is our recommendation, but any other thickness will work too.

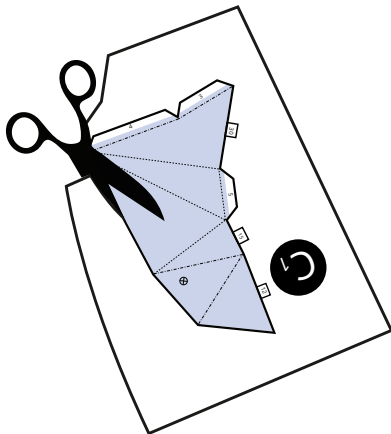
INSTRUCTIONS FOR PRINTING AND FOLDING

Choose a cardstock that your printer is able to print on. Our recommendation is 160gsm-200gsm / 60lb-100lb. Set the print settings to **'High Quality'**.

(1) Print your mask pieces on cardstock.

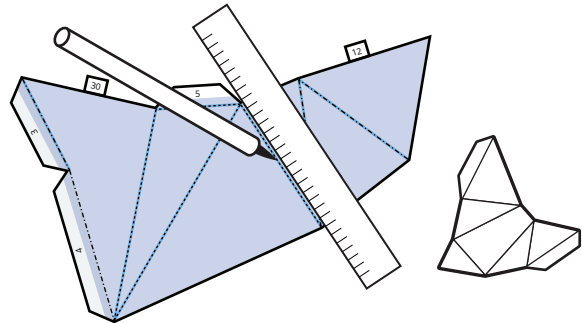


(2) Cut out the pattern pieces along the solid cutting lines.

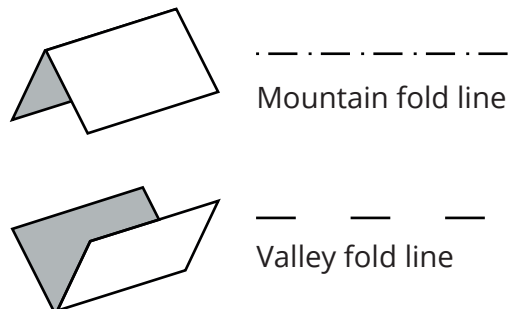


Note: the dashed lines are folding lines, make sure not to cut them!

(3) Using a folding bone or a thick sewing needle and a ruler, score along the folding lines.



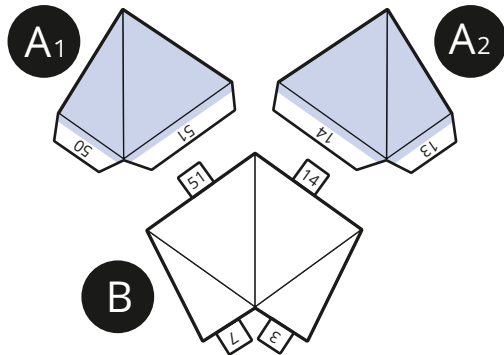
(4) Refer to the diagram below and fold along the creases, either bringing the two edges towards you (Valley Fold) for the plain dashed line folds or away from you (Mountain Fold) for the dot/-dashed line folds.



MASK ASSEMBLY INSTRUCTIONS

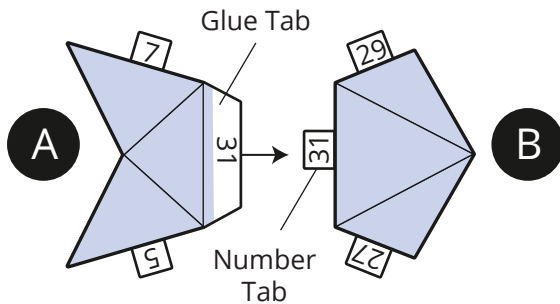
Lay out the pieces

Each piece is labelled. Place the pieces in alphabetical order. **Note: symmetrical pieces have the same letter but a different number.** ($A1 < \text{symmetrical} > A2$).



Find matching pieces

Start with piece A and piece B. Each has small numbers either on a **glue tab** or a **number tab** along its edges. A number from piece A will be an exact match with a number from piece B. Locate the glue tab below one of the matching numbers.



We recommend using one of the following methods for attaching the mask pieces together.



Option 1 / Easy clear Adhesive Tape

Place a piece of tape on the outside of the pattern covering the joint where the two edges meet. Tape all pieces together.

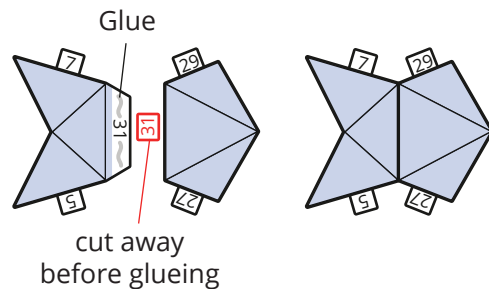
pro: easy and fast!

con: tape is visible from the outside



Option 2 / Advanced glue

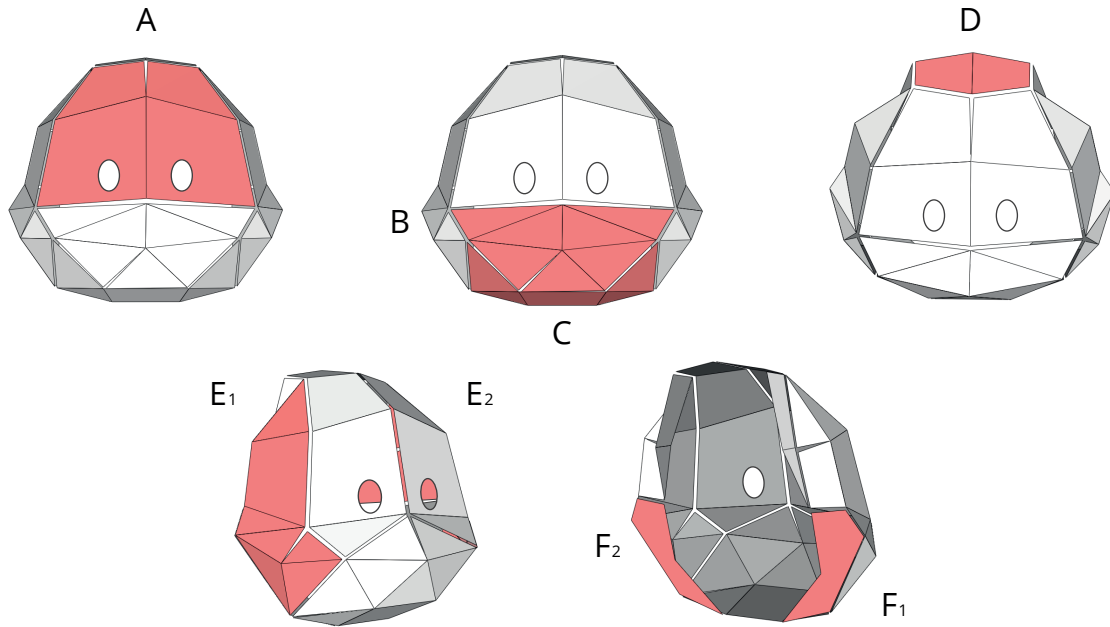
A thin strip is all you need on the glue tab. Note: Before glueing, cut away the number tab on the corresponding side. Press the glue tab firmly to the edge. Continue this process for each piece in alphabetical order. The glue tab and number should not be visible from the outside of the mask.



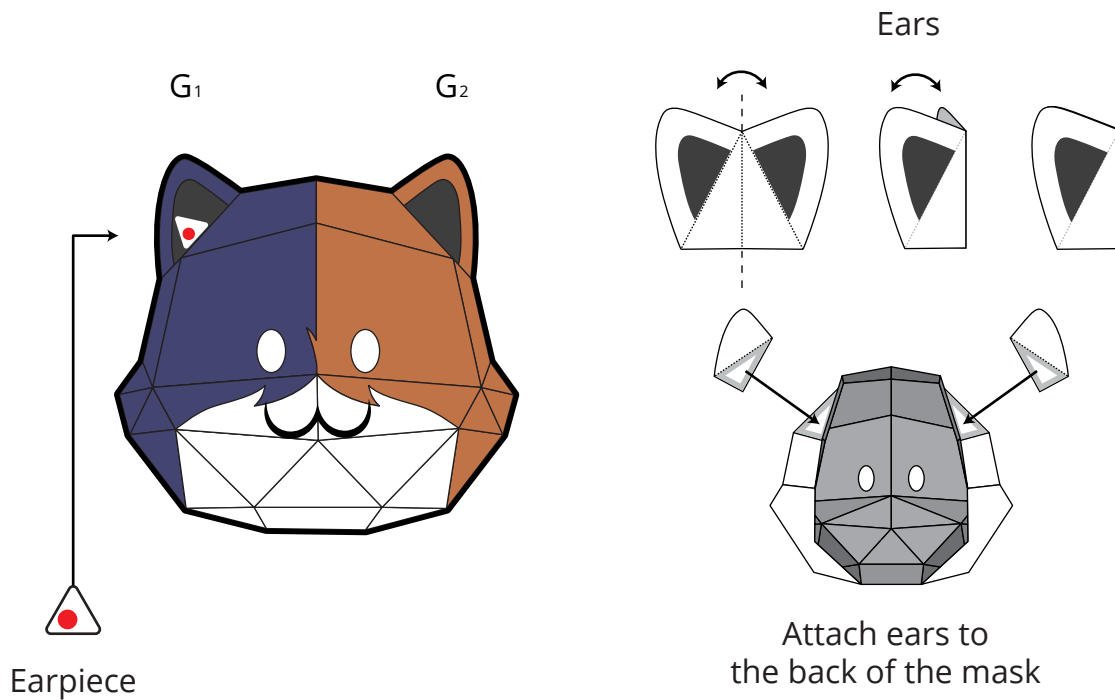
pro: invisible!

con: time consuming

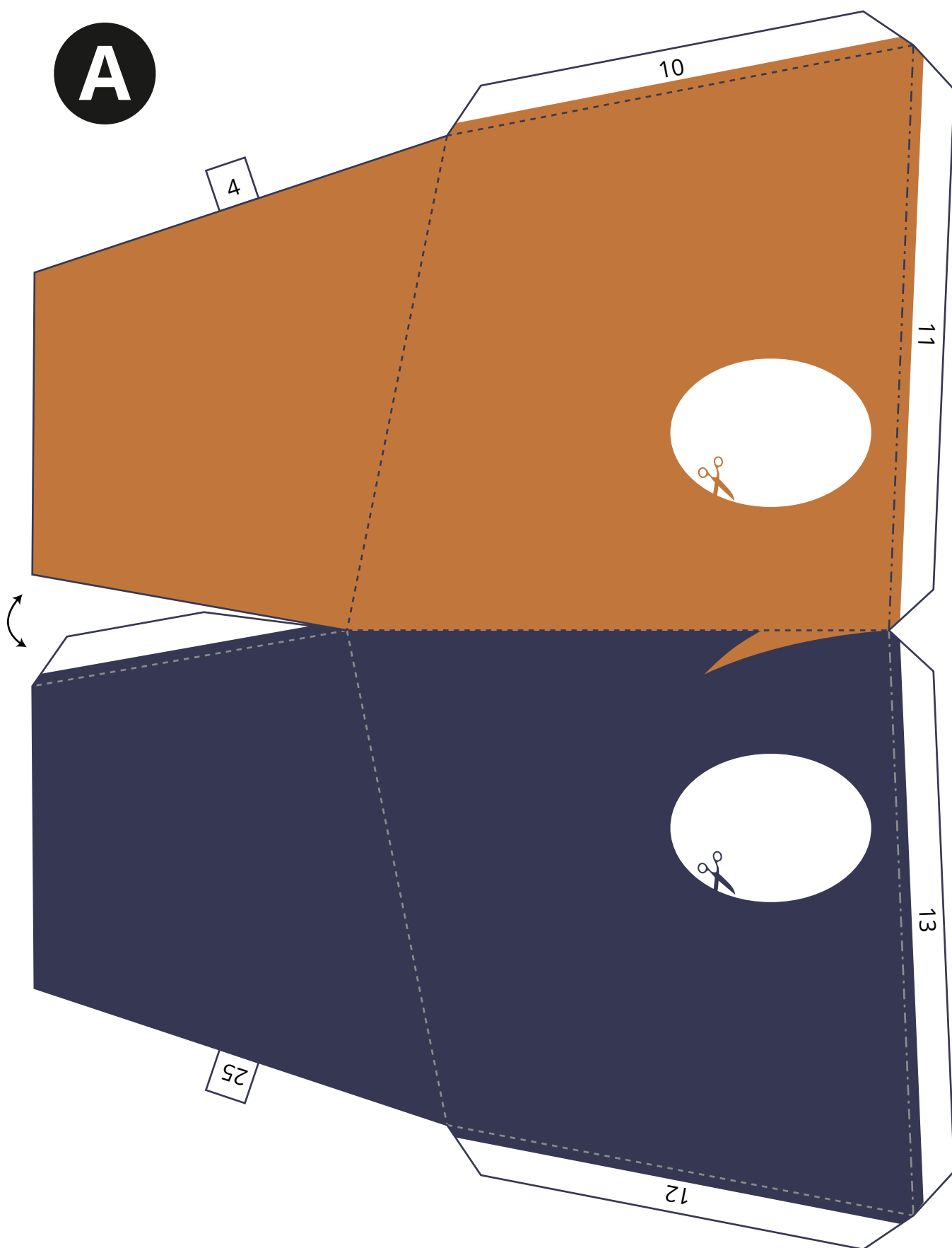
PATTERN GUIDE

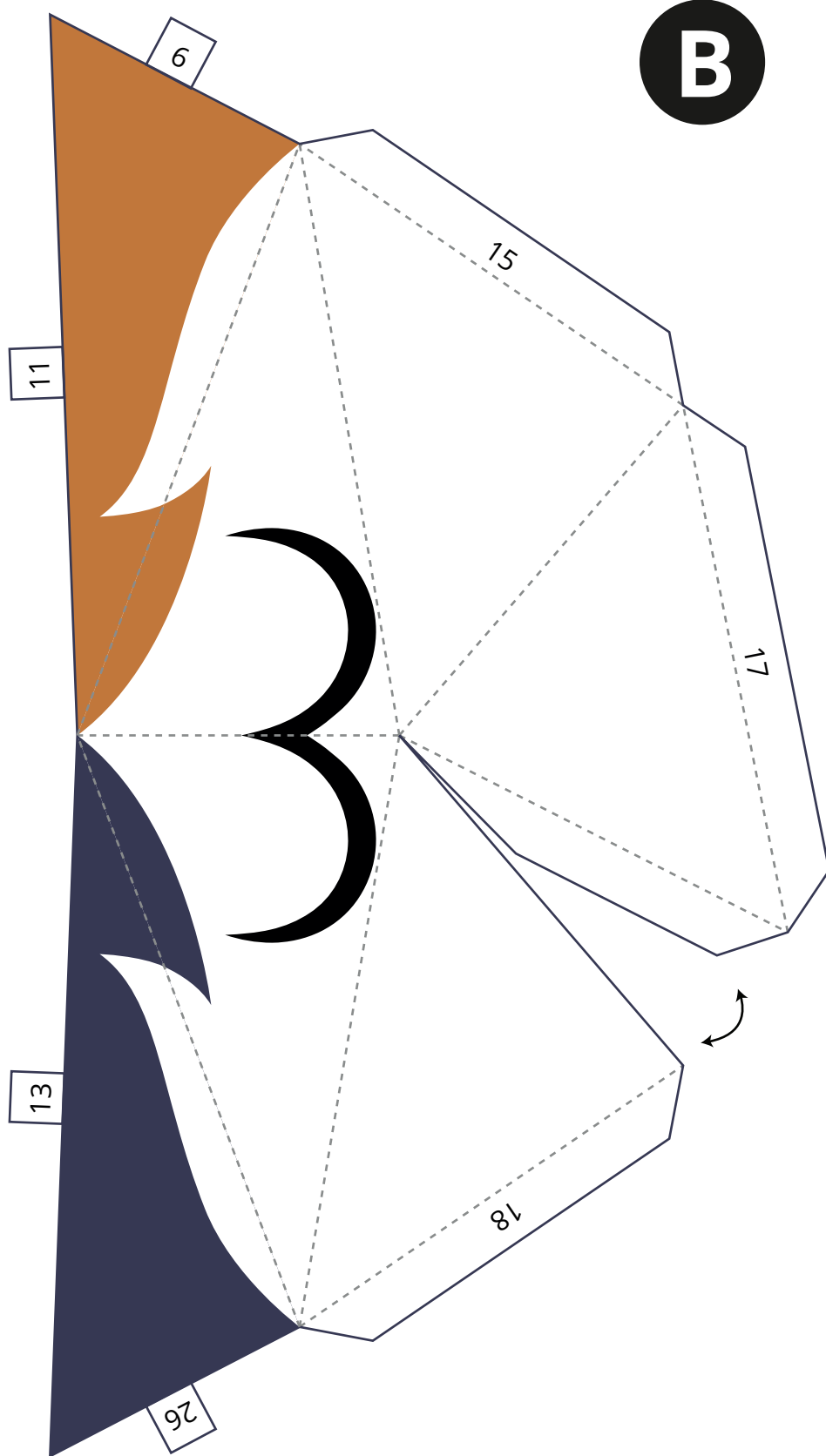


Start with pattern piece A and continue in alphabetical order.

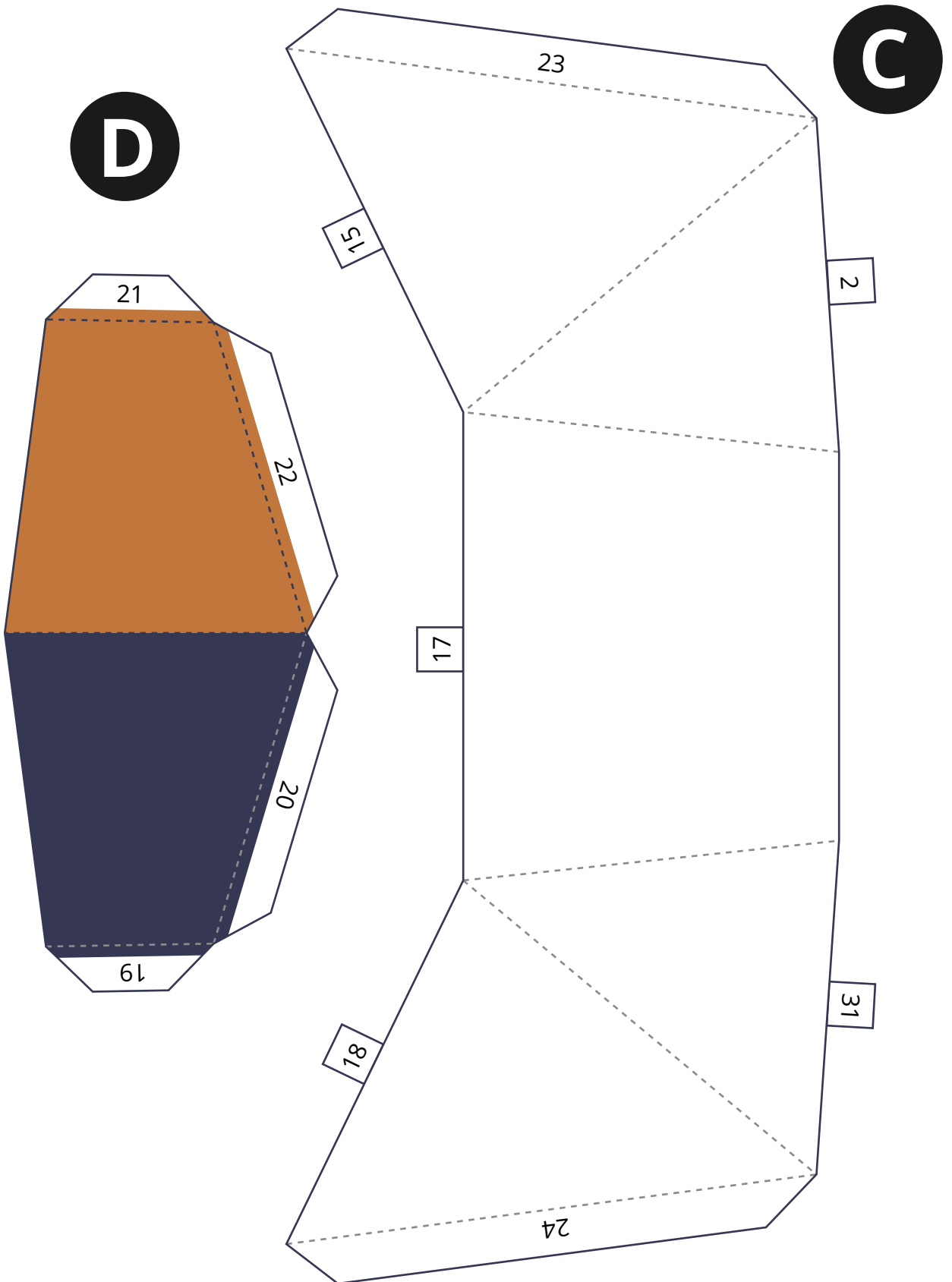


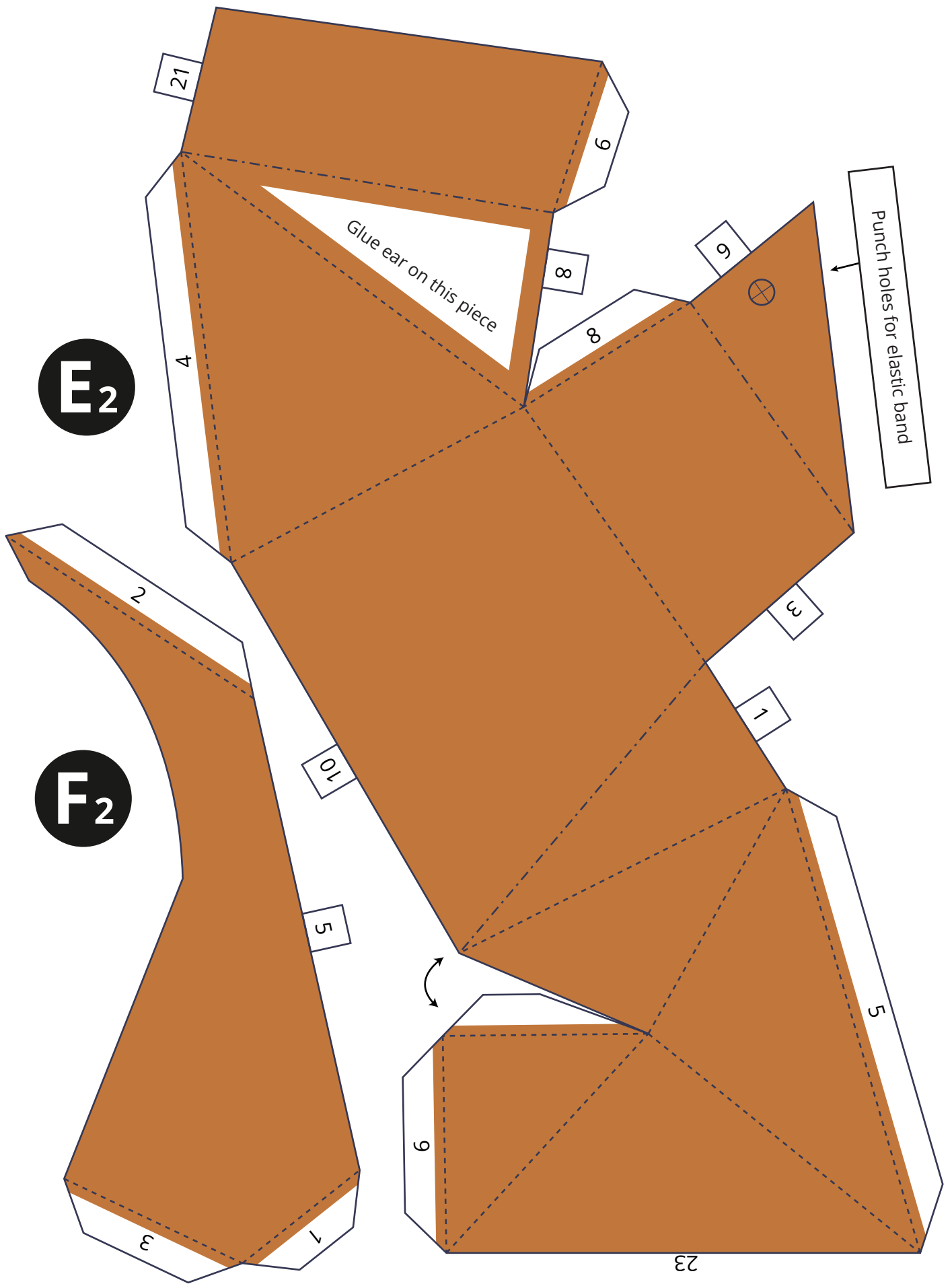
A

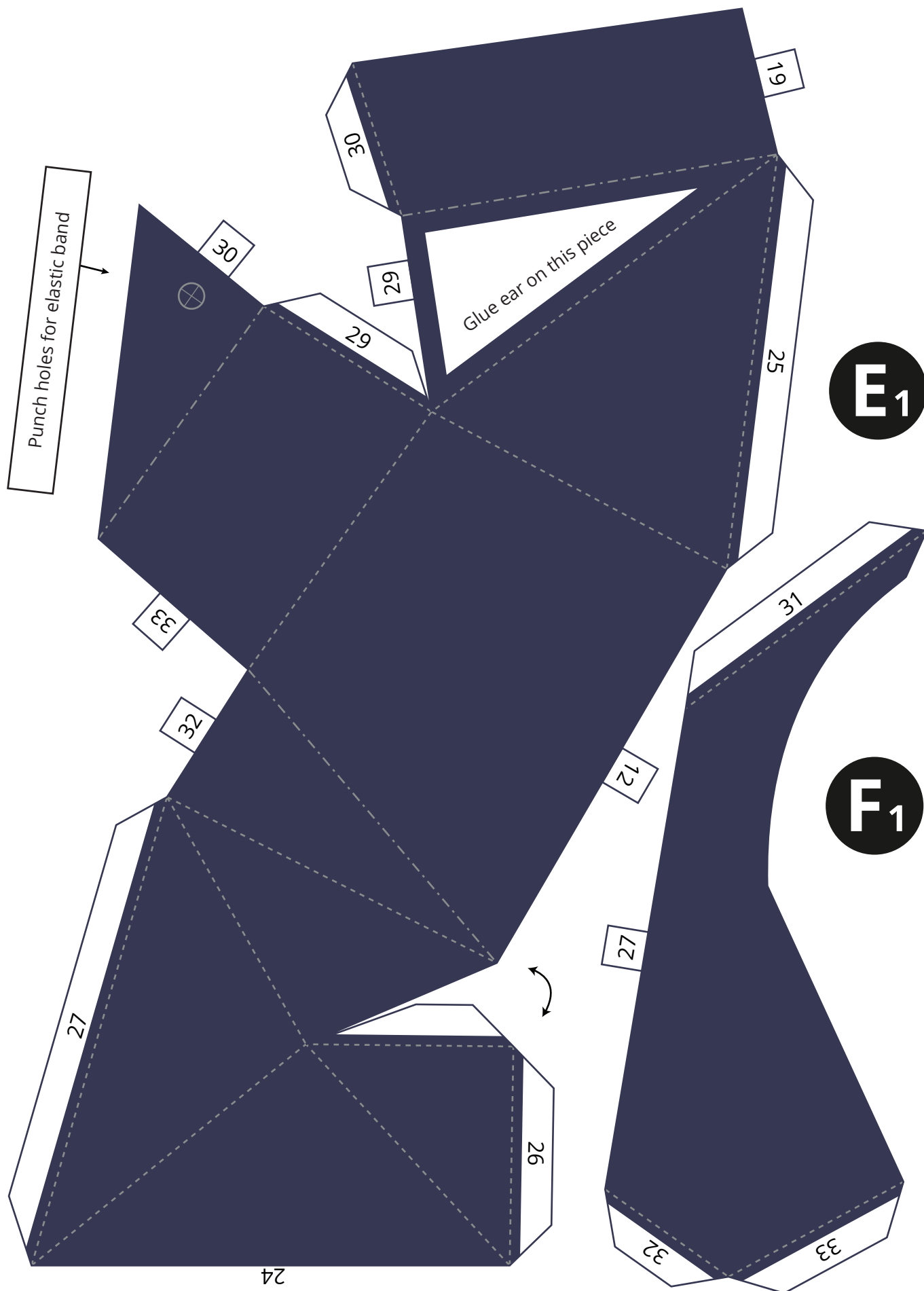




B





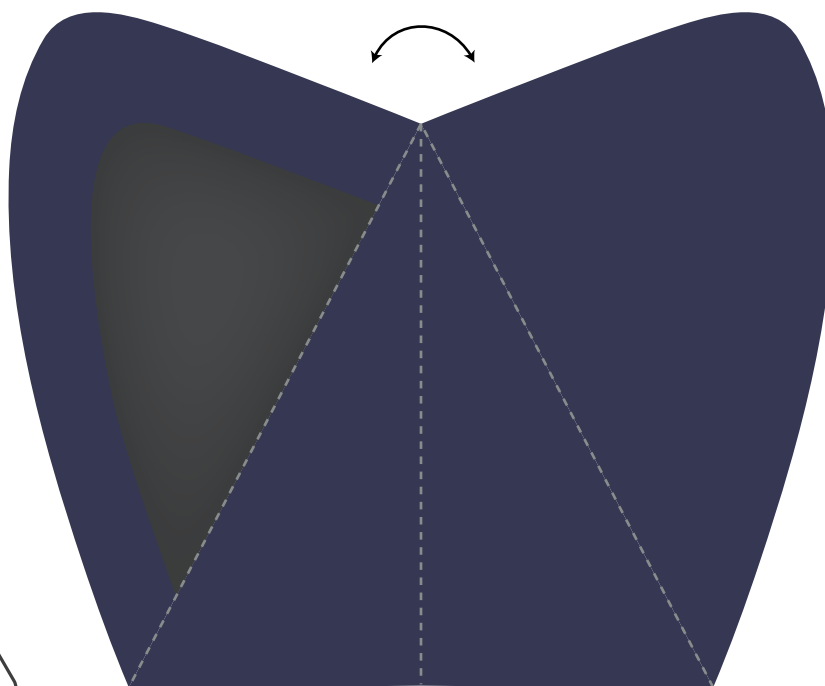


Ears

G₁



Earpiece



G₂

