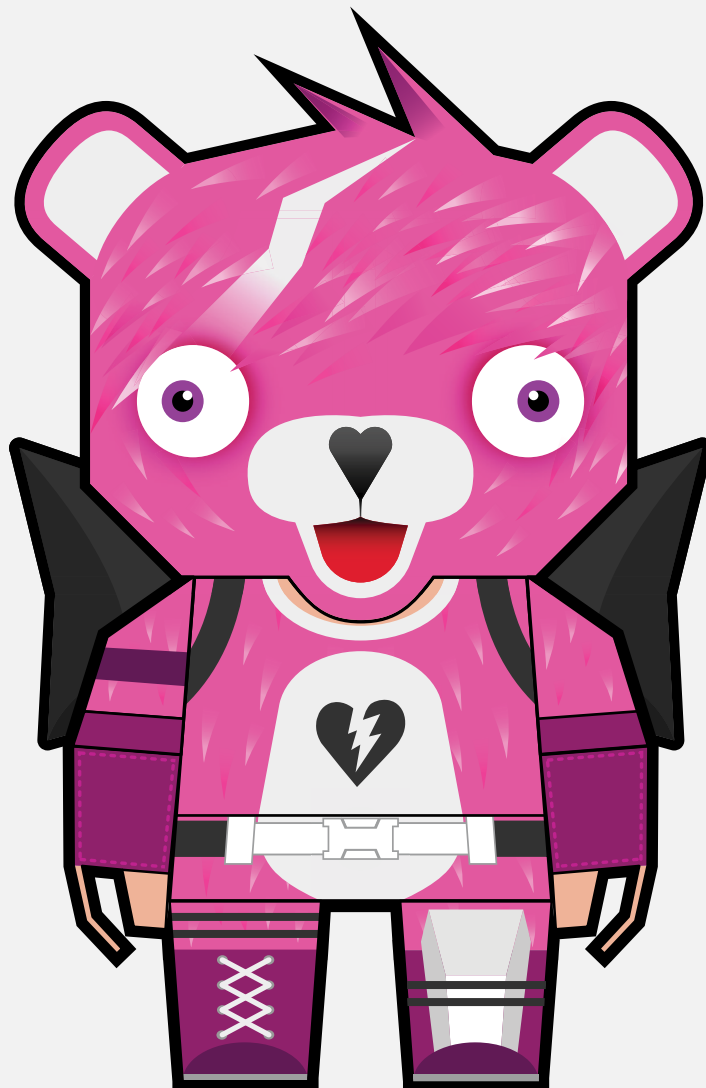


FORTNITE®

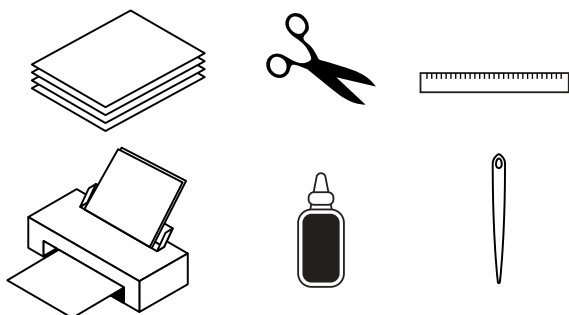
#MYFNVALENTINE

LÍDER DA EQUIPE DE ABRAÇOS MINIFIGURA DE DOBRADURA



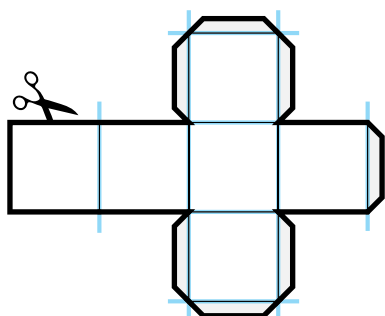
COMO MONTAR

NÍVEL DE DIFICULDADE: MUITO FÁCIL
TEMPO NECESSÁRIO: 40-60 MINUTOS



MATERIAIS NECESSÁRIOS:

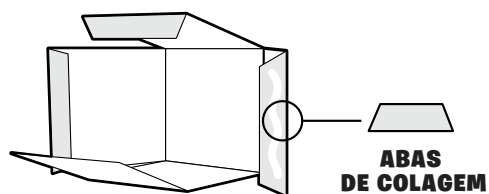
- PAPEL OU CARTOLINA A4 OU CARTA ESPESSURA RECOMENDADA: 120 G/M² A 160 G/M²
- IMPRESSORA
- TESOURA OU ESTILETE
- COLA DE ARTESANATO
- DOBRADEIRA OU AGULHA GROSSA
- RÉGUA



1. IMPRIMIR, VINCAR E RECORTAR

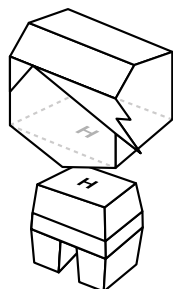
IMPRIMA O MOLDE. USANDO UMA DOBRADEIRA OU AGULHA DE COSTURA GROSSA E UMA RÉGUA, VINQUE AS LINHAS DE DOBRA (ILUSTRADO EM AZUL) PARA DOBRAR AS PARTES COM FACILIDADE.

AGORA, RECORTE AS PARTES DO MOLDE AO LONGO DAS BORDAS.



2. DOBRAR E COLAR

DOBRE E COLE CADA BLOCO DE CONSTRUÇÃO DA FIGURA SEPARADAMENTE. APLIQUE A COLA NAS ABAS DE COLAGEM CONFORME A ILUSTRAÇÃO.

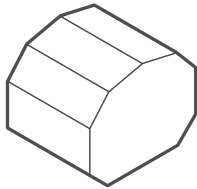


3. MONTAR

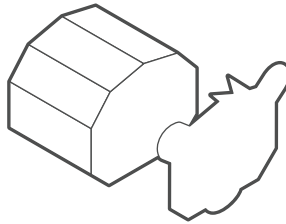
JUNTE AS PEÇAS INDIVIDUAIS. CONSULTE AS PEQUENAS IDENTIFICAÇÕES PARA SABER O LOCAL DE CADA PARTE E MONTE A FIGURA NA ORDEM CORRETA.

ORDEM DE MONTAGEM

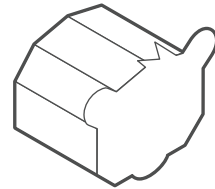
1.



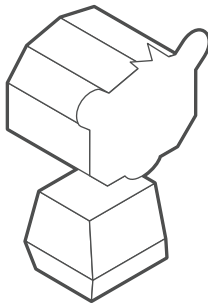
2.



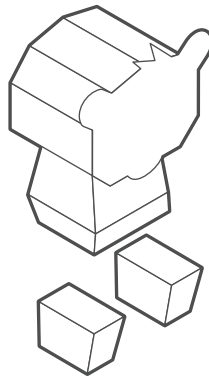
3.



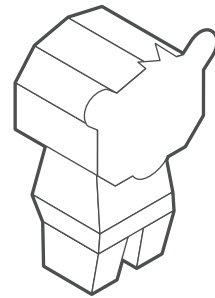
4.



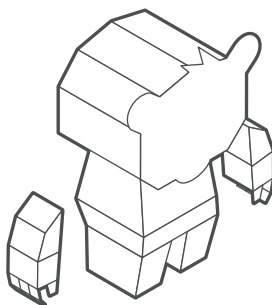
5.



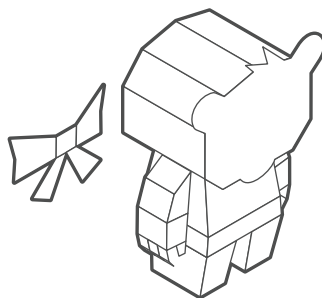
6.



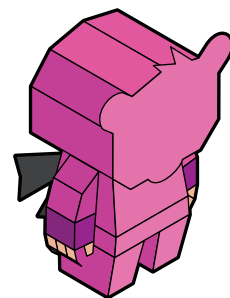
7.

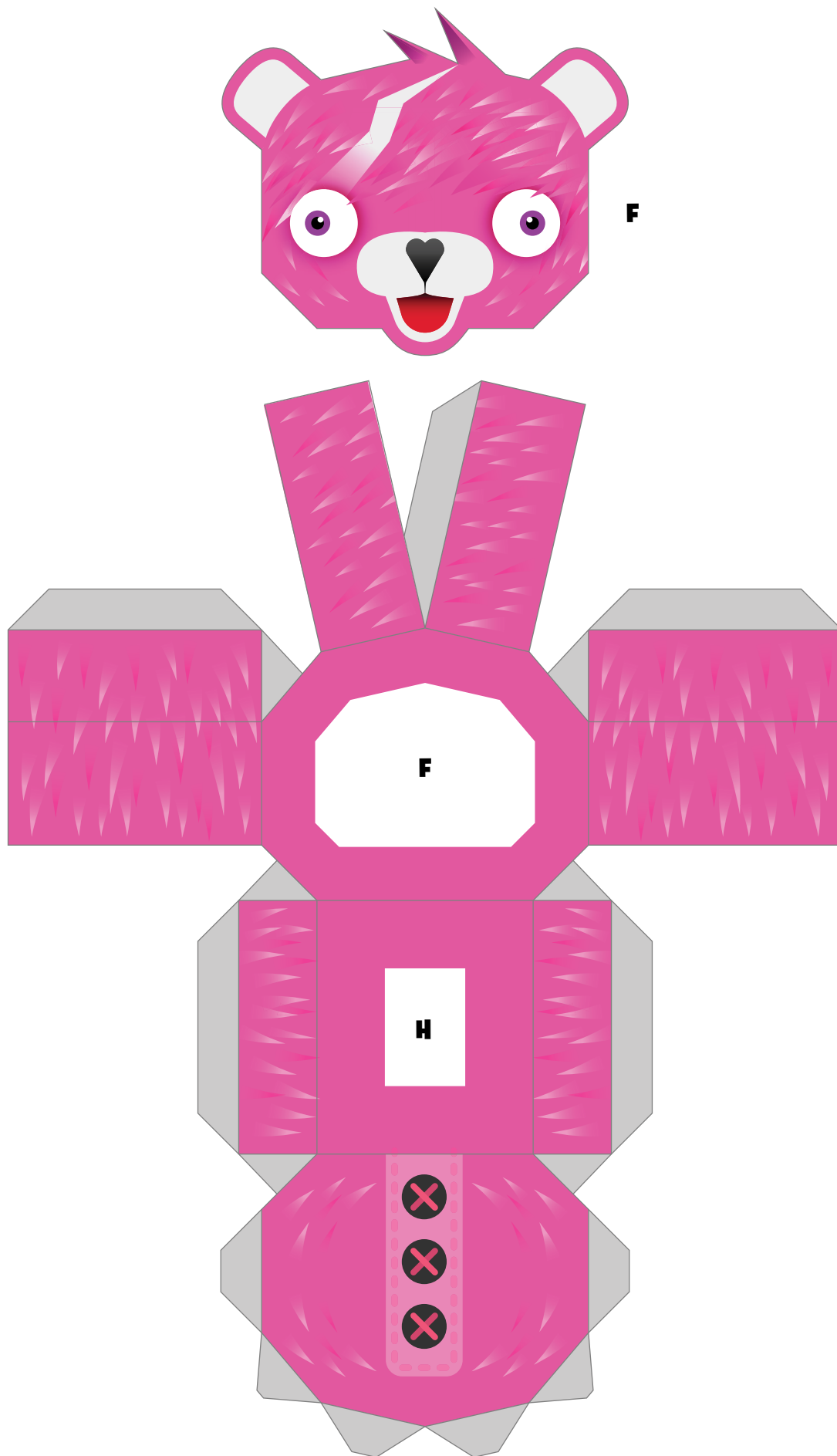


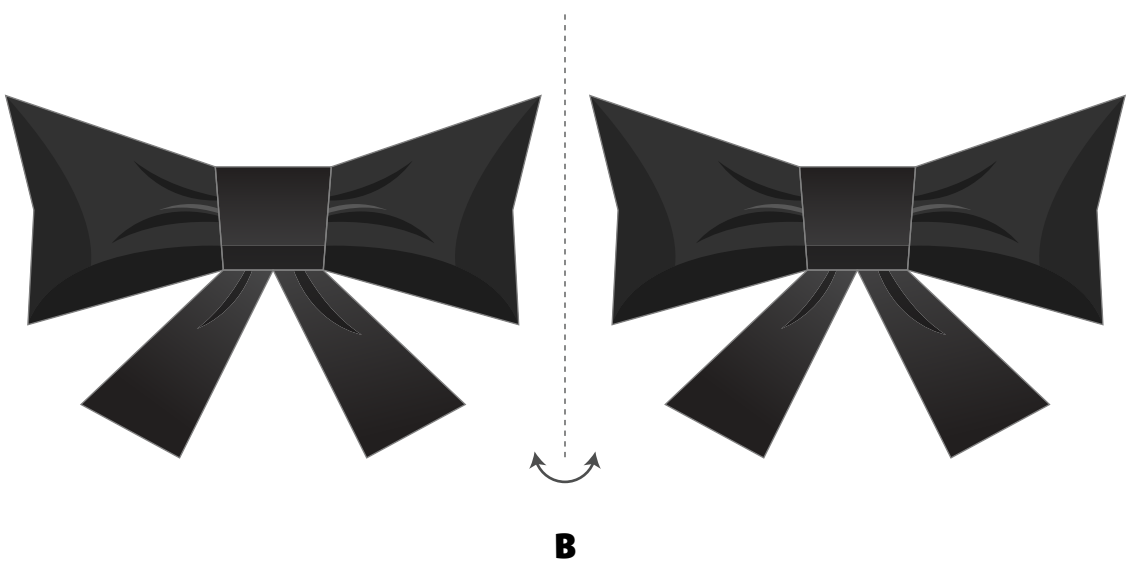
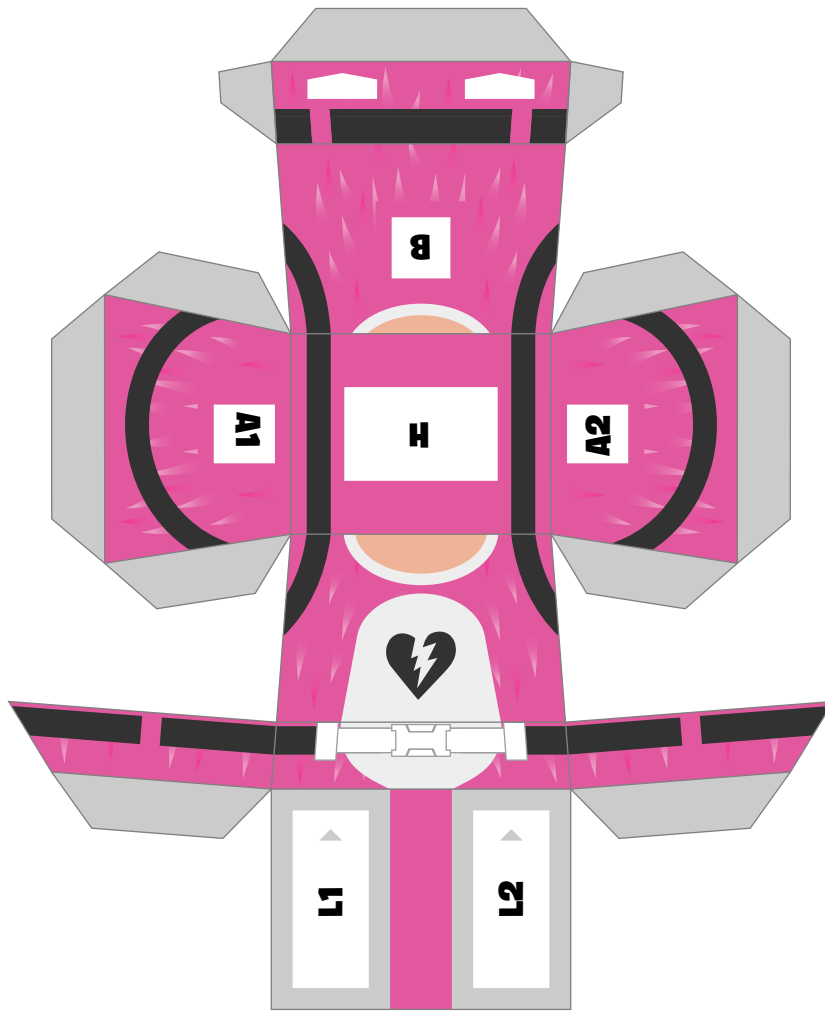
8.



9.







B

